



AGENDA
Regular Council
Tuesday, September 11, 2018
Council Chambers 3:00 PM

	Page
1. CALL TO ORDER	
2. ADOPTION OF AGENDA	
3. INVOCATION	
4. PLEDGE OF ALLEGIANCE	
5. CONSTITUTION WEEK PROCLAMATION	
6. CONSENT AGENDA	
6.1. August 14, 2018 - Regular Meeting August 14, 2018 Minutes	3 - 15
6.2. August 14, 2018 - Closed Session	
6.3. Tax Release Tax Release	16 - 17
7. PUBLIC COMMENT	
8. NEW BUSINESS	
8.1. NEW BUSINESS	18
8.2. Discussion and action upon an Ordinance to Amend Section 50.99 Regarding Penalties for Violation of Solid Waste Management Regulations Solid Waste Penalty Revision	19 - 22
8.3. Discussion and possible action regarding the Curbside Solid Waste Survey Curbside Garbage Collection Survey	23 - 42
8.4. McGill Associates Additional Water Supply Wells Proposal for Professional Services Council Request from Utilities	43 - 49
8.5. Discussion and action upon the Proposed Amendment to the Official Zoning Map Proposed Amendment to the Official Zoning Map	50 - 61
9. TOWN MANAGER AND STAFF REPORTS	
9.1. Staff Monthly Reports	62
9.2. TDA Monthly Report	63 - 64

9.3.	Fire Monthly Report	65
9.4.	Water Treatment Monthly Report	66 - 67
9.5.	Wastewater Monthly Report	68
9.6.	Police Monthly Report	69
9.7.	Public Works Monthly Report	70
9.8.	Building Inspections Monthly Report	71
9.9.	Recreation Monthly Report	72 - 80
10.	TOWN COUNCIL COMMENTS	
11.	ADJOURNMENT	

MINUTES
BEECH MOUNTAIN TOWN COUNCIL
Regular Meeting – August 14, 2018

CALL TO ORDER – Mayor Renee Castiglione called the regular meeting of the Beech Mountain Town Council to order at 3:00 p.m., Tuesday, August 14, 2018 in the Town Hall Council Chambers located at 403 Beech Mountain Parkway, Beech Mountain, North Carolina 28604. Other Council Members present were Barry Kaufman, Carl Marquardt, Weidner Abernethy, and Wendel Sauer. A quorum was present. Town Attorney Stacy C. Eggers, IV was present. Staff members present included Town Manager Tim Holloman, Finance Officer Steve Smith, Interim Town Clerk Katherine Johnson, Police Chief Tim Barnett, Director of Infrastructure Robert Heaton, Planning Director Preston Yates, Special Projects Director Riley Hatch, Fire Chief Robert Pudney, Utilities Superintendent Daniel Davis and Parks and Recreation Director Sean Royall.

- I. Adoption of Amended Agenda** – Councilman Sauer motioned to approve the amended agenda. Vice Mayor Kaufman seconded the motion, the vote carried unanimously.
- II. Closed Session** – At 3:00 p.m., Councilman Sauer moved to enter closed session pursuant to N.C. Gen. Stat. §143-318.11 (a)(3) for the purpose of discussing attorney-client matters. The motion was seconded by Vice Mayor Kaufman and passed unanimously.
- III. Invocation** –Town Manager Tim Holloman presented the invocation.
- IV. Pledge of Allegiance** – Mayor Castiglione led the Pledge of Allegiance to the flag.
- V. Other Business** – There was no other business.
- VI. Consent Agenda** – Mayor Castiglione opened the floor for Council to take action on the consent agenda. Councilman Sauer motioned to approve the consent agenda. Vice Mayor Kaufman seconded the motion, the vote passed unanimously. The consent agenda included:
 - a.** July 10, 2018 – Regular Meeting
 - b.** July 10, 2018 – Closed Session Meeting
 - c.** July 23, 2018 – Special Meeting
 - d.** Deed Transfer from Beech Mountain Sanitary District
 - e.** Annual Tax Settlement – Current Year & Prior Years
 - f.** Order to Collect Taxes

VII. Public Comment –

Wilson King, of 405 Beech Mountain Parkway, said he did not expect to be here. I was here a month ago and we had important issues to discuss. Thank you to the Council, Beech Mountain is going back to the way it used to be. A beautiful place. Our sign down the road, says welcome cyclist. Bikers are back on the roads without fear of getting hit. I am confused about why golf carts bring up such a complicated problem. In my efforts to talk to people, I have learned a lot of different inputs. One said golf carts are environmentally friendly. Then I found out some golf carts have gas. Another concern that I heard is what if someone opens up a business and rents them out. Someone said there were only 40 private golf carts. Finally, someone said what if we just allow golf carts to go to the recreation area and golf course. This may be a solution. I suggest we gather research, talk to people, and come up with a solution. Also, the city-wide speed limit is 25 mph on our roads. The common practice is to add 5 mph to the speed limit. 30 mph is too fast for our roads. We should change the speed limit on the gravel roads to 15mph, and 20 mph on other roads.

Monie McCoury of 6091 Hwy 421, Bristol, Tennessee, said we are no longer on the mountain. Does the town have any idea that our sign was removed? I did not remove the sign. He asked Chief Barnett to keep a look out for our sign. We rent that space there. We are no longer on Beech Mountain. We will leave it there to promote tourism. We lease the property, so we will leave our sign up. Please keep an eye out for our sign. It is not okay to vandalize our property. That is all I have. We still love this mountain.

Barbara McCay, of 121 Hollow Tree Road, said in 2002 the town acquired three flat lots on Pinnacle Ridge Road for a memorial park. They were zoned by the Council for this purpose. This is a great opportunity to add a memorial park to the town plan. Perhaps this is your opportunity to appoint a committee to determine how the town can move forward with this project. A memorial park would be wonderful for those that want their remains to stay on Beech Mountain. Remember, many people are just dying to stay on Beech Mountain forever.

Frank Steele, of 107 Christy Way, said he wanted to echo what Wilson King said about the golf carts. I have ridden up and down this mountain since the mid-70s. Somehow this golf cart issue has floated to the top. I can make arguments for both sides. Whatever this Council decides to do, I want to warn you for the safety of both the golf cart driver and others. Look at this as an opportunity to modify and repair an ordinance to what it should be. Whatever direction you choose to go, keep safety and legal protection in front. Make sure that no homeowner can start a business to rent out golf carts.

VIII. Public Hearing

a. Public Hearing on Ordinance Section 154.071 'Watershed Protection Ordinance' –

Mayor Castiglione announced that there will be a change to this ordinance. She said for commercial uses we are changing it from 5% to 10% for balance of the watershed. There were no comments from the public during this public hearing.

Mayor Castiglione asked for a motion to close the public hearing on Ordinance Section 154.071 'Watershed Protection Ordinance'. Vice Mayor Kaufman motioned to close the public hearing. Councilman Sauer seconded the motion, the vote passed unanimously.

IX. New Business

a. Discussion and action upon Ordinance Section 154.071

Councilman Sauer wanted to make a motion with the change of 5% to 10%. Councilman Kaufman seconded the motion. There was no discussion.

The ordinance passed with a five to zero vote. All Council members voted in the affirmative.

b. Discussion and action upon the request for approval to have West Consultants finalize and closeout the contract for the construction for the Water Treatment Plant upgrade project

Councilman Sauer said we had a presentation earlier in closed session discussing what the contractor wanted for the final payment of the water plant. The contractor wants 157,000 for the project. I make a motion that we agree to pay \$78,500 in liquidated damages. We want to retain \$78,500 in liquidated damages. Councilman Abernethy seconded the motion. Attorney Eggers, IV, clarified that this will closeout the contract for the construction of the Water Treatment Plant upgrade project. There was no other discussion from the Council. The vote passed unanimously.

c. Bear Resistant Trash Cans for Town Properties and Trails

Mayor Castiglione said we will talk about the bear resistant trash cans. Councilman Abernethy said we need to follow our own ordinance. The trash cans do not meet the ordinance. I haven't seen an issue up there, but, since we have an ordinance we should follow it. Councilman Sauer said he reviewed the ordinance itself and it does not require bear proof containers. It basically specifies wood containers and it even grandfathered in those with

no tops on it. So, if you had an open container you did not need to have a lid. Councilman Marquardt asked if the containers that are currently there meet this ordinance. Councilman Abernethy said the container is a wooden bin with no lid. Councilman Abernethy said it has not been an issue, but, he thinks in our high traffic areas, we should have containers that you see in national parks. The high traffic areas need better containers. Town Manager Tim Holloman said we will place 4 bear proof containers through private donations. One will be at the Town Hall, visitor center, and 2 at the recreation center. Holloman said if we would do any more this year, we would put one at the boat dock. Mayor Castiglione asked Parks and Recreation Director Sean Royall if the boat dock is an issue. Royall said the recreation center gets hit every week, if the bears can't get into the recreation center they will go to the boat dock. Holloman said the boat dock garbage can would be \$1,500 with shipping. Vice Mayor Kaufman moves to buy the one trash can for the boat dock. Councilman Abernethy seconded the motion. Councilman Abernethy asked when it will come. Holloman said it will be here before Christmas. All were supportive. The vote passed unanimously.

d. Discussion of Curbside and alternate trash collections methods

Town Manager Tim Holloman said the Town Council had a Town Hall meeting last month. Around 60 people were in attendance. The Sanitation Committee started meeting in March to look for alternatives. We discussed that regardless we will have compactors at our new convenience center once it is built. So, that should help some. Soon we will order a garbage truck if we do not switch from curbside. We do have a survey that's almost ready to go out, if Council wants to still do the survey. If we don't switch from curbside, we will order the truck in September and it will take six months to get here. We are having some trouble with our trucks once in a while. Mayor Castiglione asked if we were still down one truck. Public Works Director Robert Heaton said we got the truck back yesterday. Councilman Sauer said it was clear at the Town Hall (meeting) that people wanted to continue curbside pickup. I also picked up from what people were saying it's not Beech Mountain residents. It's the renters. When people leave, they usually leave on Sunday night or Monday morning. To limit the problem, we should do pickups Thursday, Friday, Sunday, Monday, and Tuesday. When I would go down to visit my sister in Florida, I would leave at 4:00 am. We should open the convenience center at 4:00 am on Sunday and Monday. We can maybe work it out with the police department. I think we should change the days and hours of the pickups. Vice Mayor Kaufman asked what the maximum price is we can charge in regards to penalties. Attorney Eggers, IV said a civil penalty can be up to \$500. In certain circumstances it can be higher if it is a public safety issue. Mayor Castiglione said we heard from many people that we should not penalize those doing the right thing, but we should penalize those doing the wrong thing. We do an escalated penalty, there is no

warning anymore. Public Works Director Robert Heaton said the penalties include: (1) fee to pick it up so thirty dollars, and (2) cost to pick it up and \$100 fine. Heaton said in the current ordinance, the maximum fine is \$100. Vice Mayor Kaufman said he is looking into changing the ordinance, so it is higher than \$100. I think we should start off with a higher fine the first time. If they don't change, put a bear proof container on their property, and have the resident pay for it. Attorney Eggers, IV said this may be done as a condition of collection. Councilman Abernethy asked how many fines there have been. Heaton said there has been 22 fines in the last six months. Councilman Abernethy said he is for removing all the trash cans. I think there needs to be a service for our older residents, so we can work with them. The town could purchase a bear proof container for them and have them pay for it. Vice Mayor Kaufman said it's not the residents, it's the renters. I have someone on my street that rents out his property. Ever since then, we have had to clean up four times for them. The renters do not care. Councilman Marquardt said he does not have trash pickup at his house. It works for me. But, many people are in favor of keeping them. We are supposed to serve the community. This is what the community wants. Mayor Castiglione said there should be an incremental fine where it may be \$200 for the first one, \$350 for the second one, and \$500 for the third one. Councilman Marquardt said shut off their water on the third warning if we really want to solve the problem. If you want to stop this, you need to make the property non-rentable. Attorney Eggers, IV said that cannot be done. Mayor Castiglione said for the fourth time, we get the bear proof garbage containers, and they pay for it. Councilman Sauer said the fee could go onto the utility bill. If they do not pay the utility bill, then their water will be shut off. Councilman Marquardt said if it gets put on the utility bill, he will be supportive. Mayor Castiglione said if this doesn't help in a year, say goodbye to your garbage. At that time, we would have tried everything. This year we should do the three fines and make them severe, so people learn. Councilman Marquardt said the total cost for everything including installation will go on the utility bill. Councilman Marquardt said the limited hours of the convenience center affects my business. There should be one dumpster that people can get to 24 hours, with cameras to stop contractors dumping at night. There should be a single dumpster with a shoot that people could throw their garbage away 24 hours. Town Manager Tim Holloman said Robert Heaton and I have been talking about it. If we are open 24 hours, we will need more employees. We are wearing our guys out for the amount of overtime. Robert Heaton said he is not against keeping it open. I was asked to clean it up. I can leave it open, but don't yell at me if it's a mess on Monday morning. The guys are working 25 hours of overtime a week. Councilman Abernethy asked if they could just hire someone. Tim Holloman said we don't have it in the budget. The Council must approve that. If we want to open it 24 hours we may need 6 more employees. Mayor Castiglione said the problem is that people leave early in

the morning and they need to put the trash somewhere. The best solution I have heard, is what Councilman Marquardt said. We could leave it closed and have a dumpster with a shoot on it that they can access it 24 hours. Robert Heaton said he has an idea. I can think this out. Councilman Abernethy said two months ago the convenience center was spotless. Mayor Castiglione said the truck broke and that's what caused the mess. Councilman Abernethy said this is the first I have heard that the truck is broken. I think a little communication would be good especially for something this significant. I think an email should go out to inform us. Tim Holloman said in the future we can send out an email. But, the trucks have been up and down. It's not like it's been out for a month. Tim Holloman said we are still doing the survey. If Council waits a year to do away with curbside pickup, I can tell Robert Heaton to get the new truck. Mayor Castiglione said we need to wait to get the survey back before we can get the new truck. Tim Holloman said we will try to get the survey out as soon as possible. Mayor Castiglione addressed Councilman Abernethy's comment about not knowing about the truck. She explained that communication goes both ways. We need to communicate with Tim Holloman as well.

e. Discussion of Golf Carts

Councilman Abernethy said he needs clarity. The ordinance says that golf carts can only drive to and from the golf course for the purpose of playing golf. Attorney Eggers, IV said the way it has been enforced by the police chief in the past, if someone is going to the golf course for other amenities at the club that would be included. Attorney Eggers, IV said he is not aware of anyone cited for this. Councilman Abernethy said golf carts are not and have not been an issue. I disagree with your assessment because people on golf carts can go to the club pool or any club facility. What you are saying is that people could go to the Alpen House, that is a club facility. So, they can travel down Beech Mountain Parkway to go to the Alpen House. Attorney Eggers, IV said we need to refer to the officer's discretion on how they interpret that. Councilman Abernethy said its black and white. You can either do it or you can't. Vice Mayor Kaufman said the ordinance list streets that you can drive on, that's a road that you cannot drive on. Councilman Abernethy said this ordinance needs to be tightened up. What if we have one officer that says it's okay and another officer that says it's not okay and they give you a ticket. The ordinance either needs to be amended or it needs to be enforced. Mayor Castiglione said so you are basically saying you want the police department to give out tickets to someone going to the tennis court. We are a complaint driven ordinance town. Councilman Abernethy said so why have the ordinance. If I am driving down the road and I throw trash out and a police officer sees me throw trash out my window, I can't get a ticket unless a neighbor complains. Mayor Castiglione said the police officer can give you a ticket because he saw you do it. It's like speeding. If a police officer sees you

speeding they can give you a ticket or not give you a ticket. Councilman Abernethy said so the police officer can see a golf cart going down the road. Mayor Castiglione said the police officer could stop a golf cart and give them a ticket or not give them a ticket. Just like speeding. Attorney Eggers, IV explained that Council can implement any ordinance amendments they want. Councilman Abernethy said he is in favor of golf carts going anywhere on Beech Mountain. Councilman Marquardt said in the longer rate, I would be interested in a more golf cart friendly community. Given the provisions of headlights, taillights, rear view mirrors, licensed drivers only and have private golf cart owners register their vehicle with the town. Councilman Abernethy said we need to be consistent with our ordinances. Either we have them and enforce them or we don't. Mayor Castiglione asked Councilman Abernethy why he voted for this ordinance last month. Councilman Abernethy said he specifically asked Attorney Eggers, IV with the current ordinance that we have were the UTVs in violation. And he said yes. Mayor Castiglione asked why he voted for it. Councilman Abernethy said because that is what I was told to get the UTVs off the mountain. Vice Mayor Kaufman said it's a safety issue with golf carts. Having them drive on curvy roads is an accident waiting to happen. Mayor Castiglione said this is very complicated. This is a huge public safety issue. I drove on Greenbriar for the last two weeks, I went around a blind curve and SUVs are cutting curves and almost hit me head on. If that was a golf cart, someone would be splattered all over the ground. It would not be the person in the car. Right now, I need to do research. I need to know if other mountain communities allow golf carts. I need to do more research. I will not vote for this until I do research. Councilman Abernethy said there has been more bike accidents on Beech Mountain than golf cart accidents. Councilman Abernethy said the ordinance needs to be tightened up and why can Beech Mountain Club Members have golf carts and others can't. I think this is discrimination. Attorney Eggers, IV said if there is a need to change, my role is to enact what the council says the policy needs to be. Councilman Sauer said at this point in time we have an ordinance, the police department can use their discretion to stop the person and may talk to them and may or may not issue a ticket. Councilman Abernethy said you can't pick and choose. Councilman Sauer said police do it all the time. Mayor Castiglione said they do it all the time with speeders on the mountain. Do you go 25 mph on this mountain all the time? If you go over 25 mph are you going to get a ticket. Councilman Abernethy made a motion for an ordinance that says golf carts can be driven to and from the Beech Mountain Club and any club facility. There was no second. Councilman Sauer said in pursuit of section 30.43 of the Town of Beech Mountain Code of Ordinances, I move that we prevent discussion of this matter for six months. Vice Mayor Kaufman seconded the motion. The vote passed unanimously.

X. *Town Manager and Staff Reports*

Town Manager Tim Holloman said the LED lighting at Town Hall is finished. The floor has been done. This Friday, there will be a ribbon cutting at the Avery County Extension Center. They came to our Water plant opening. We had \$49,000 Shane Park Donations. We had a fundraiser evaluation this past week.

XI. *Town Council Comments*

Mayor Castiglione asked John Merritt how many new houses we are doing up here now. John Merritt said we have had 4 brand new houses. Mayor Castiglione said thank you to Frank Steele for being the DJ at the street dances. They have been really fun, and you do a great job.

Councilman Sauer thanked Brian Barnes and the golf course for the support of the fire department. Thank you for volunteering at the concerts and driving around.

Councilman Marquardt said thank you for everyone coming. I am disappointed about what Monie McCoury said about his sign. We are better than that. I am also interested in learning more about the memorial park.

XII. Adjourn – Upon motion by Councilman Sauer, seconded by Councilman Abernethy, the Council voted unanimously to adjourn at 5:25 p.m.

Minutes approved by Town Council on September 11, 2018.

Renee D. Castiglione, Mayor

ATTEST:

Katherine Johnson
Interim Town Clerk

**ATTACHMENT TO MINUTES
BEECH MOUNTAIN TOWN COUNCIL
Regular Meeting – August 14, 2018**

- I. Ordinance Section 154.071 ‘Watershed Protection Ordinance’

Ordinance No. 2018-__

TOWN OF BEECH MOUNTAIN

**AN ORDINANCE TO AMEND §154.071 REGARDING POND CREEK
WATERSHED OVERLAY DISTRICT**

WHEREAS, the Town of Beech Mountain is a resort and retirement community which wishes to provide for the health of its citizens, residents, and property owners; and

WHEREAS, the Town of Beech Mountain desires to maintain water quality within the Town of Beech Mountain by addressing environmental concerns caused by density and incompatible developments; and

WHEREAS, the Town of Beech Mountain has previously adopted §154.071 as overlay districts for various watersheds within the town of Beech Mountain in coordination with the North Carolina Division of Water Quality; and

WHEREAS, the State of North Carolina Division of Water Quality presently has an area within the corporate limits of the Town of Beech Mountain designated as the Pond Creek WS-II and Pond Creek WS-III watershed districts; and

WHEREAS, the Town of Beech Mountain Watershed Overlay Map presently denotes these areas as being part of the Pond Creek WS-II and Pond Creek WS-III Overlay District; and

WHEREAS, §154.071 presently does not discuss the Pond Creek WS-II and Pond Creek WS-III watershed standards due to an oversight and the Town of Beech Mountain now wishes to clarify this discrepancy by the adoption of regulations as to the Pond Creek WS-II and Pond Creek WS-III Overlay Districts; and

WHEREAS, the adoption of the Ordinance Amendment as set forth below will promote the health, safety, and general welfare of the Beech Mountain community and further the protection of high quality waters as a natural resource within the Town of Beech Mountain.

NOW THEREFORE, BE IT ORDAINED BY THE TOWN COUNCIL OF THE TOWN OF BEECH MOUNTAIN, NORTH CAROLINA, THAT:

SECTION I. CHAPTER 154: ZONING of the Town of Beech Mountain Code of Ordinances is hereby amended as follows:

§154.071 is hereby amended to include the following definitions:

§154.071(B) shall read as follows:

(4) *Pond Creek WS – II.* WS II is an overlay district as shown on the official Zoning Map primarily intended to maintain a predominantly undeveloped land use intensity pattern. Single-family uses, where permitted, shall be allowed at a maximum of one dwelling unit per acre on a project by project basis. All other residential and non-residential development shall be allowed a maximum of 12% built-upon area, where permitted. In addition, commercial uses may occupy 5% of the balance of the watershed with a 70% built-upon area when approved as a special, non-residential intensity allocation (SNIA). The Zoning Administrator is authorized to approve SNIA's consistent with the provisions of this chapter. Projects must minimize built-upon surface area, direct storm water away from surface waters and incorporate Best Management Practices to minimize water quality impacts. Landfills and sites for the land application of residuals or petroleum-contaminated soils are prohibited in the district. No activity, situation, structure or land use shall be allowed within the WS-II and WS-II-C water supply watersheds which pose a threat to water quality or the public health, safety and welfare. Such conditions may arise from (for example) inadequate on-site sewage systems, inadequate sedimentation and erosion control measures, the improper storage or disposal of junk, trash or other refuse within a buffer area, the improper management of storm water runoff or any other situation found to pose a threat to water quality.

(5) *Pond Creek WS – III.* In order to maintain a low to moderate land use intensity, single family detached uses shall develop at a maximum of two (2) dwelling units per acre (2 du/ac). All other residential and non-residential development shall be allowed at a maximum of twenty-four percent (24%) built-upon area. In addition, new development and expansions to existing development may occupy ten percent (10%) of the balance of the watershed area with up to seventy percent (70%) built-upon area when approved as a special intensity allocation (SIA). The Watershed Administrator is authorized to approve SIAs consistent with the provisions of this ordinance. Projects must, to the maximum extent practicable, minimize built-upon surface area, direct storm water away from surface waters and incorporate Best Management Practices to minimize water quality impacts.

SECTION II. CODIFICATION. The provisions of Section I of this Ordinance shall be published as appropriate in the Town of Beech Mountain Code of Ordinances as soon as practicable.

SECTION III. SEVERABILITY CLAUSE. If any section, part or provision of this Ordinance is declared unconstitutional or invalid by a court of competent jurisdiction, then it is expressly provided and it is the intention of the Town Council in passing this Ordinance that its parts shall be severable and all other parts of the

Ordinance shall not be affected thereby and they shall remain in full force and effect.

SECTION IV. PUBLICATION AND EFFECTIVE DATE. This Ordinance shall take effect immediately upon its passage and publication according to law.

READ, CONSIDERED, PASSED AND APPROVED at a regular meeting of the Town Council of Beech Mountain, North Carolina, at which a quorum was present and which was held on the 14 day of August, 2018.

This Ordinance adopted the 14 day of August, 2018.

Renee D. Castiglione
Renee D. Castiglione, Mayor

Attest:

Katherine Jon
Town Clerk



Council Members

Renee Castiglione, Mayor
Barry Kaufman, Vice Mayor
Weidner Abernethy
Carl Marquardt
Wendel Sauer



Town Manager
Tim H. Holloman

Town Attorney
Stacy C. Eggers IV

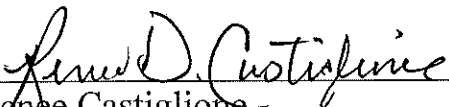
ORDER TO COLLECT

STATE OF NORTH CAROLINA
COUNTIES OF AVERY & WATUAGA

To the Tax Administrator of the Town of Beech Mountain:

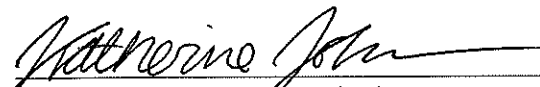
You are hereby authorized, empowered, and commanded to collect the taxes set forth in the tax record files in the office of the Tax Administrator and in the tax receipts delivered to you, in the amount and form the taxpayers likewise therein set forth. Such taxes are hereby declared to be a first lien upon all real property of the respective taxpayer in the Town of Beech Mountain, and this order shall be full and sufficient authority to direct, require, and enable you to levy on and sell any real or personal property of such taxpayers, for and on account of, in accordance with the law.

Witness my hand and official seal, this 14th day of August, 2018



Renee Castiglione

ATTEST:



Katherine Jackson, Clerk



(Seal)

Town of Beech Mountain

Request for Council Action

FROM: Tax Administrator
SUBJECT: Tax Release
TO: Beech Mountain Town Council
DATE: 09-11-2018
REQUESTED BY: Rebecca Ward- Tax Administrator

Public Hearing Required Yes No
Properly Advertised Yes No Will be required
Public Notice Yes No Will be required

BACKGROUND:

Pursuant to NC G.S. 105-381 all releases and refunds must be approved by the governing board.
Pursuant to NC G.S. 105-380 all refunds must be approved by the governing board.

ATTACHMENTS:

1. Max Riley (release)

STAFF RECOMMENDATIONS:

Staff is asking that Council *approve* the refund

COUNCIL ACTION:

TOWN OF BEECH MOUNTAIN TAX OFFICE

RELEASE REQUEST

PROPERTY OWNER	LAST	FIRST	MIDDLE
	Riley	Max	
ADDRESS	204 Pinnacle Ridge Rd, Beech Mountain, NC 28604		
LOCATION	Personal Property	COUNTY	Watauga

I HEREBY REQUEST RELEASE OF TAX UNDER G.S. 105-381 FOR THE FOLLOWING YEAR:

YEAR	ASSESSMENT		TAX AMOUNT			RECEIPT NUMBER
	TOWN	DISTRICT	TOWN	DISTRICT	TOTAL	
2018	16910				123.78	

ACCOUNT NUMBER	
PARCEL NUMBER	953

AMOUNT OF RELEASE	\$123.78
-------------------	----------

DATE OF COUNCIL MEETING	09-11-2018
-------------------------	------------

SPECIFIC REASON FOR RELEASE
 sold boat. release per county

Rebecca Ward
 Tax Administrator

Approved By _____ Date _____

REFUND REQUEST

I HEREBY REQUEST REFUND OF TAX UNDER G.S. 105-380 FOR THE FOLLOWING YEARS:

YEAR	TAX	INTEREST PENALTIES COSTS	TOTAL PAID	DATE PAID	TOTAL REFUND
MAKE CHECK TOTAL					

SPECIFIC REASON FOR REFUND

Tax Administrator _____ Approved By _____ Date _____



NEW BUSINESS

Eastern America's Highest Town

Town of Beech Mountain

Request for Council Action

FROM: Four Eggers, Town Attorney/Town Manager Tim Holloman
SUBJECT: Solid Waste Penalty Revision
TO: Town Council
DATE: September 11, 2018
REQUESTED BY: Council

Public Hearing Yes No Will be required
Properly Advertised Yes No Will be required

BACKGROUND:

The Town of Beech Mountain has experienced difficulties arising from trash and litter being left by citizens, residents, and visitors in an unsecured condition such that wind, animals, and other conditions result in such trash being strewn about outside its proper receptacle. This trash is unsightly and is a public health hazard. Considerable resources of the Town of Beech Mountain are being expended on remedying and cleaning up improperly placed trash. As discussed in previous council meetings, the penalty structure set forth in Section 50.99 of the Town of Beech Mountain Code of Ordinances is insufficient to compensate the Town staff for its manpower and other expenses associated with addressing the problem, nor to deter repeat offenses. If the ordinance is approved, the following will be the new penalties.

- A. A first offense within a twelve-month period shall be subject the offender to a civil penalty in the amount of one hundred dollars (\$100.00);
- B. A second offense within a twelve-month period shall subject the offender to a civil penalty of \$350.00;
- C. A third offense within a twelve-month period shall subject the offender to a civil penalty in the amount of \$500.00;
- D. A fourth or subsequent offense within a twelve-month period shall subject the offender to a civil penalty in the amount of \$500.00. Additionally, the Town shall discontinue garbage collection services to this location unless and until the offender obtains and install a bear and wildlife resistant trash container equal to or greater than the standards set forth in both this ordinance and those utilized by the United States Forest Service, as promulgated through The United States Department of Agriculture.
- E. In addition to the penalties set forth herein, the Town of Beech Mountain may also pursue any and all remedies available to it as set forth in Chapter 11, §11.01.

STATEMENT OF PLAN CONSISTENCY:

It is the opinion of staff that the proposed action IS IS NOT consistent with the Comprehensive Plan for Beech Mountain or other officially adopted plan (list if other:_____).

Specifically, this action is in accord with the following sections of the Comprehensive Plan:
Goal PS.G1: Ensure Operational Capability for Emergency Services Departments.

This initiative helps to avoid confusion between addresses and would facilitate better emergency response.

ATTACHMENTS:

1. Ordinance to Amend Section 50.99 – Solid Waste Penalty Revision

STAFF RECOMMENDATIONS:

Council Discretion

COUNCIL ACTION:

Ordinance No. 2018-__

TOWN OF BEECH MOUNTAIN

AN ORDINANCE TO AMEND §50.99 REGARDING PENALTIES FOR VIOLATION OF SOLID WASTE MANAGEMENT REGULATIONS

Whereas, the town of Beech Mountain is a Municipal Corporation and political subdivision of the State of North Carolina; and

Whereas, N.C. General Statute §160A-174 authorizes the Town of Beech Mountain to enact ordinances and regulations to promote the health, welfare, and safety of the Town of Beech Mountain; and

Whereas, the Town of Beech Mountain presently engages in residential solid waste collection for the convenience of the citizens and residents; and

Whereas, the Town of Beech Mountain has experience difficulties arising from trash and litter being left by citizens, residents, and visitors in an unsecured condition such that wind, animals, and other such conditions result in such trash being strewn about outside its proper receptacle; and

Whereas, such trash is unsightly and is a public health hazard; and

Whereas, considerable resources of the Town of Beech Mountain are being expended on remedying and cleaning up improperly placed trash; and

Whereas, the existing penalty structure set forth in §50.99 of the Town of Beech Mountain Code of Ordinances is presently insufficient to compensate the Town staff for its manpower and other expenses associated with addressing the problem, nor to deter repeat offenses;

NOW THEREFORE, be it resolved by the Town of Beech Mountain is hereby amended as follows:

Section I. Town of Beech Mountain Code of Ordinances § 50.99 is hereby amended to read as follows:

Any person that violates any provision of this chapter or any rule of the rules of operation for the recycling center shall be subject to the penalty as set forth herein:

A. A first offense within a twelve month period shall be subject the offender to a civil penalty in the amount of one hundred dollars (\$100.00);

B. A second offense within a twelve month period shall subject the offender to a civil penalty of \$350.00;

C. A third offense within a twelve month period shall subject the offender to a civil penalty in the amount of \$500.00;

D. A fourth or subsequent offense within a twelve month period shall subject the offender to a civil penalty in the amount of \$500.00. Additionally, the Town shall discontinue garbage collection services to this location unless and until the offender obtains and install a bear and wildlife resistant trash container equal to or greater than the standards set forth in both this ordinance and those utilized by the United States Forest Service, as promulgated through The United States Department of Agriculture.

E. In addition to the penalties set forth herein, the Town of Beech Mountain may also pursue any and all remedies available to it as set forth in Chapter 11, §11.01.

SECTION II. CODIFICATION. The provisions of Section I of this Ordinance shall be published as appropriate in the Town of Beech Mountain Code of Ordinances as soon as practicable.

SECTION III. SEVERABILITY CLAUSE. If any section, part or provision of this Ordinance is declared unconstitutional or invalid by a court of competent jurisdiction, then it is expressly provided and it is the intention of the Town Council in passing this Ordinance that its parts shall be severable and all other parts of the Ordinance shall not be affected thereby and they shall remain in full force and effect.

SECTION IV. PUBLICATION AND EFFECTIVE DATE. This Ordinance shall take effect immediately upon its passage and publication according to law.

READ, CONSIDERED, PASSED AND APPROVED at a regular meeting of the Town Council of Beech Mountain, North Carolina, at which a quorum was present and which was held on the _____ day of _____, 2018.

This Ordinance adopted the _____ day of _____, 2018.

Renee D. Castiglione, Mayor

Attest:

Town Clerk

Town of Beech Mountain

Request for Council Action

FROM: Tim Holloman
SUBJECT: Curbside Trash Collection Survey
TO: Mayor and Council
DATE: September 11, 2018
REQUESTED BY: Town Council

Public Hearing	<input type="checkbox"/> Yes	<input checked="" type="checkbox"/> No	<input type="checkbox"/> Will be required
Properly Advertised	<input type="checkbox"/> Yes	<input checked="" type="checkbox"/> No	<input type="checkbox"/> Will be required

BACKGROUND: The Sanitation Committee met on March 19th, 2018 because of topics from the January Council Retreat. Members of that committee are: Weidner Abernethy, Preston Yates, Riley Hatch, Robert Heaton, Matthew Clawson and Tim Holloman. Having a compactor or compactors would mean that more attendants would be needed to avoid higher maintenance costs and potential safety issues if the compactors are left unattended.

It was estimated that approximately 30 customers would need or qualify for pick up due to disability. Defining criteria for what qualifies for disability pick up would need to be codified into policy. There could be transportation issues for the disabled. Having service with a smile that Charlie currently offers is imperative. Hours of operation discussed would be between 7:00 am and 8:00 PM. Public Works would open up and Police would close the facility. Any hours of operation would need to be consistent. Site(s) need to be open and accessible. There is a desire to hold and keep expectations of customers.

Potential problems or obstacles would be that businesses would no longer be picked up and they would have to find service on their own. They could be charged a recycling fee and continue to use the convenience center for that service. People don't want to put trash in their cars. Trash might be dumped in other areas and not make it to the convenience centers. This would make enforcement necessary.

The Bears and other animals are one of the largest problems that is a result of unsecured containers. Winter Pick-up is problematic. Also, what do we do with people who have purchased Bear Proof Boxes. The Town would offer free pick up for a time.

Special Projects were to contact the businesses to gage reaction to proposed changes. There would be a need to meet with the rental agencies to discuss the process. Also, there would be concerns over how to inform those owners who use the Vacation Rental By Owner service.

A survey needs to be conducted to assess use and satisfaction with the potential change. Input would be needed from the 2,000 summer residents.

Since that time the town has changed the hours of the convenience center and has changed work schedules to accommodate more employee time in the center. A survey draft is still in the works but could be sent out shortly. The Town conducted a Town Hall meeting on July 23rd and there was a straw vote taken with approximately 45 people opposed to changing the method from curbside to recycling centers.

The Town Planning Department set the survey monkey up and it was active on August 16th, two days after the August Council Meeting. We have 664 responses as of 2:17 pm on Thursday, September 6th. We will review the survey results again prior to the Council Meeting on the 11th.

All respondents did not answer every question and the data reflect that. Briefly, we will summarize the data thus far. 80% of the respondents believe that the Town has a problem with wildlife getting into the garbage. The second question asked did respondents think that the current wooden bins be replace by metal “bear proof” bins. The results are extremely close here with 50.47% saying yes and 49.53% saying no. 44% of respondents believe that removing curbside collection would significantly address the issue of wildlife problems caused by curbside service. 43% of respondents say that it is important for the Town to provide curbside service while 34.29% do not believe it is an important service to be provided. 20.79% say it is somewhat important. If you award half the respondents of the somewhat important to the other two categories, you have roughly 60% that think it is important and 53% who think it is not. If you lump all the respondents saying somewhat into the not important responses you have about 54% that would not believe that providing that service is important.

45% of respondents are very satisfied with the current service and 26.625% are neutral on the topic. If the town were to discontinue curbside, then 53.74% think multiple convenience centers would be a good alternative.

The two top methods people receive their information is about 77% by email, internet and 50% by brochures and mail. Surprisingly approximately 17% did not know that work by contractors was not to be picked up by the Town. 60% of those responding said they use local dumpsters to dispose of their trash.

Another question not directly related to whether or not fees should be uniformly charged or charged base on volume, 40% of respondents believe cost should be based on volume and 45% say charges should be uniform.

Important to note is that 49.24% do not set their garbage out for pickup while 31.36 percent say they do weekly. An overwhelming 65% said they do not have a “bear” proof container for their home. Only 38% of the respondents say that the service is a good value for the money. 51.4% say they are satisfied with their current service. Finally, 65% say they are satisfied with the current frequency of pickup.

STATEMENT OF PLAN CONSISTENCY:

It is the opinion of staff that the proposed action IS consistent with the Comprehensive Plan for Beech Mountain or other officially adopted plan (list if other: _____).

Specifically, this action is in accord with the following sections of the Comprehensive Plan:

ATTACHMENTS: Question Analysis for 15 questions and the survey itself.

COUNCIL ACTION: Council Discretion

CURBSIDE WASTE COLLECTION SURVEY

1. Do you think that there is an issue with animals/ wildlife getting into garbage in Beech Mountain regarding town curbside garbage collection?
 - A. Yes
 - B. No
 - C. Not sure
 - D. Not applicable to me

2. Would you be in favor of requiring that wood bins used currently by homeowners be replaced by Bear Proof bins?
 - A. Yes
 - B. No

3. If you believe there *is* an issue with animals and solid waste in Beech Mountain, do you believe that this issue will be significantly addressed with the removal of the town curbside garbage collection service?
 - A. Yes
 - B. No
 - C. Not sure
 - D. Not applicable to me

4. Overall, how important do you think it is for Beech Mountain to provide curbside garbage collection services to residents?
 - A. Very important
 - B. Somewhat important
 - C. Not important
 - D. Not sure

5. Generally speaking, are you satisfied or dissatisfied with this service?
 - A. Very satisfied
 - B. Somewhat satisfied
 - C. Neither satisfied or dissatisfied
 - D. Very dissatisfied
 - E. Other

6. If town curbside garbage removal was no longer available to residents of Beech Mountain, what do you think would be a good alternative option to replace it?
 - A. There should be a main convenience center for the garbage of residents in the town

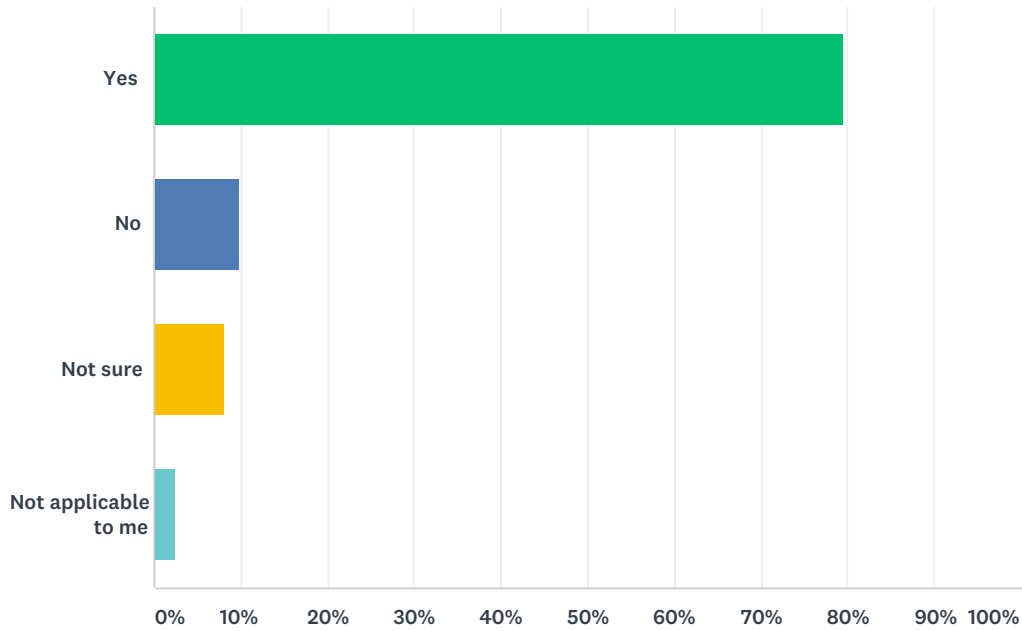
- B. There should be multiple convenience center locations for deposit of trash and recyclables.
 - C. Not sure
 - D. Not applicable to me
7. From what sources would you prefer to get information about your garbage related services and options? (Select all that apply)
- A. Brochures, mail
 - B. Newspaper
 - C. Garbage bill inserts
 - D. Email, internet
 - E. TV
 - F. Radio
 - G. Banners
 - H. Friends, neighbors
 - I. Public events
8. Are you aware that work performed by contractors is not supposed to be picked up by the Town?
- A. Yes
 - B. No
9. What is your primary disposal method for your solid waste garbage?
- A. Curbside garbage collection
 - B. Local dumpster
 - C. I share a service with another household
10. Do you think that Beech Mountain garbage collection fees should be based on how much trash a household or business produces, *or* should collection fees be the same for all residents?
- A. Cost should vary based on the amount of garbage produced
 - B. The same fees should be charged for everyone
 - C. Not sure
 - D. Not applicable, I do not have garbage collection from the Town of Beech Mountain
11. How frequently do you set out your garbage cart for garbage collection?
- Weekly
 - Every other week
 - Monthly
 - When the garbage cart gets full
 - Never
 - Not sure
12. Have you purchased a “bear” resistant receptacle to house your containers?
- A. Yes
 - B. No

C. Constructed my own

13. If the Town of Beech Mountain provides your weekly collection services, do you think that your weekly garbage collection service is a good value for the money you pay?
- A. Yes, good value
 - B. Mixed opinions
 - C. No, not a good value
 - D. Not applicable to me
14. If you are dissatisfied, please check any of the following boxes below that apply.
- A. Cost of my garbage service
 - B. Service area is not left clean after the cart is emptied
 - C. I am not sure how to use my garbage service properly
 - D. Other, please specify
15. Would you say that the frequency of your garbage pickup meets your needs, is not picked up often enough, or is picked up too often?
- A.
 - B. Meets your needs
 - C. It is not picked up often enough
 - D. It is picked up too often
 - E. Not sure

Q1 Do you think that there is an issue with animals/ wildlife getting into garbage in Beech Mountain regarding town curbside garbage collection?

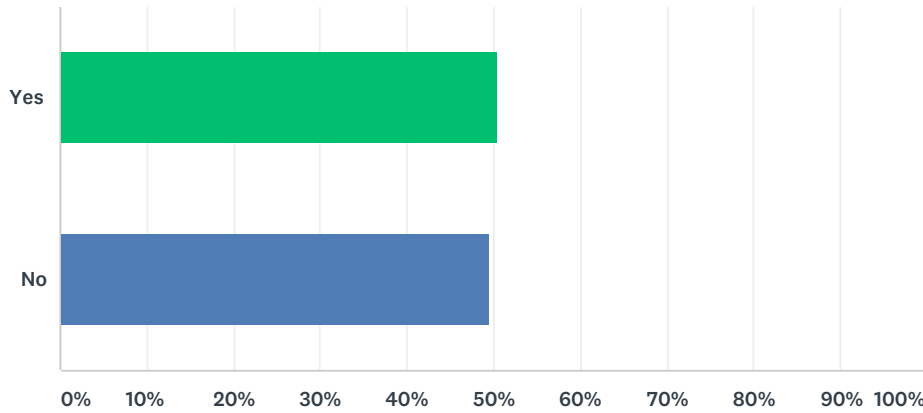
Answered: 661 Skipped: 3



ANSWER CHOICES	RESPONSES	
Yes	79.43%	525
No	9.83%	65
Not sure	8.17%	54
Not applicable to me	2.57%	17
TOTAL		661

Q2 Would you be in favor of requiring that wood bins used currently by homeowners be replaced by Bear Proof bins?

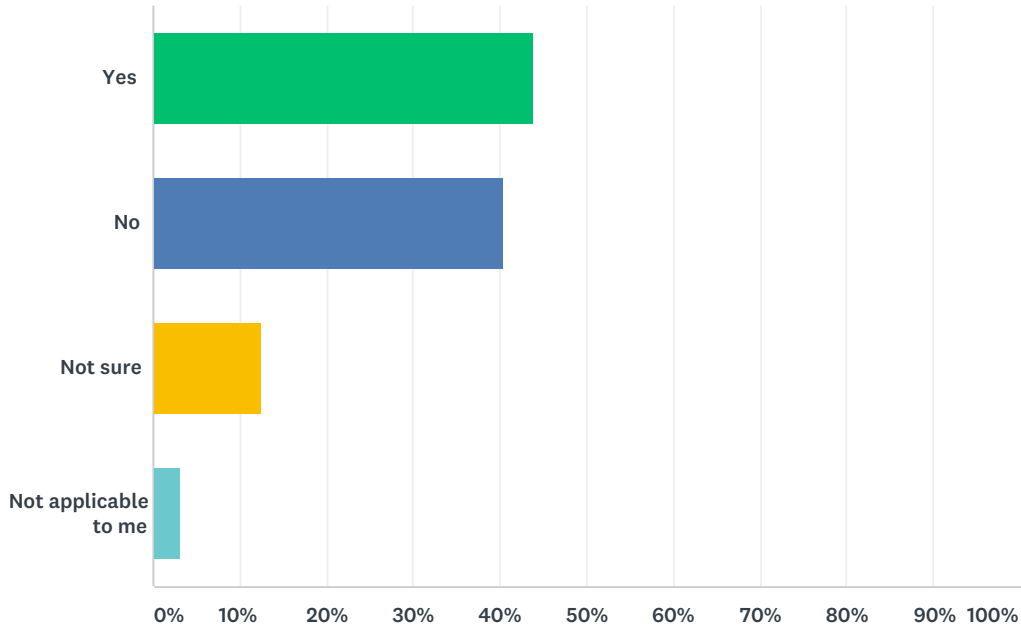
Answered: 640 Skipped: 24



ANSWER CHOICES	RESPONSES	
Yes	50.47%	323
No	49.53%	317
TOTAL		640

Q3 If you believe there is an issue with animals and solid waste in Beech Mountain, do you believe that this issue will be significantly addressed with the removal of the town curbside garbage collection service?

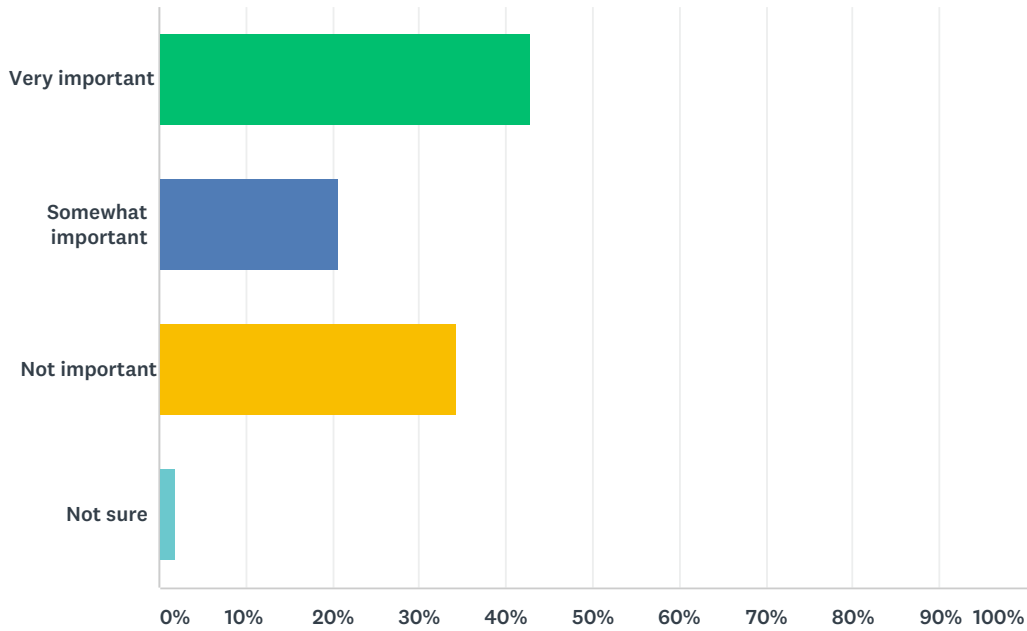
Answered: 657 Skipped: 7



ANSWER CHOICES	RESPONSES	
Yes	43.99%	289
No	40.33%	265
Not sure	12.63%	83
Not applicable to me	3.04%	20
TOTAL		657

Q4 Overall, how important do you think it is for Beech Mountain to provide curbside garbage collection services to residents?

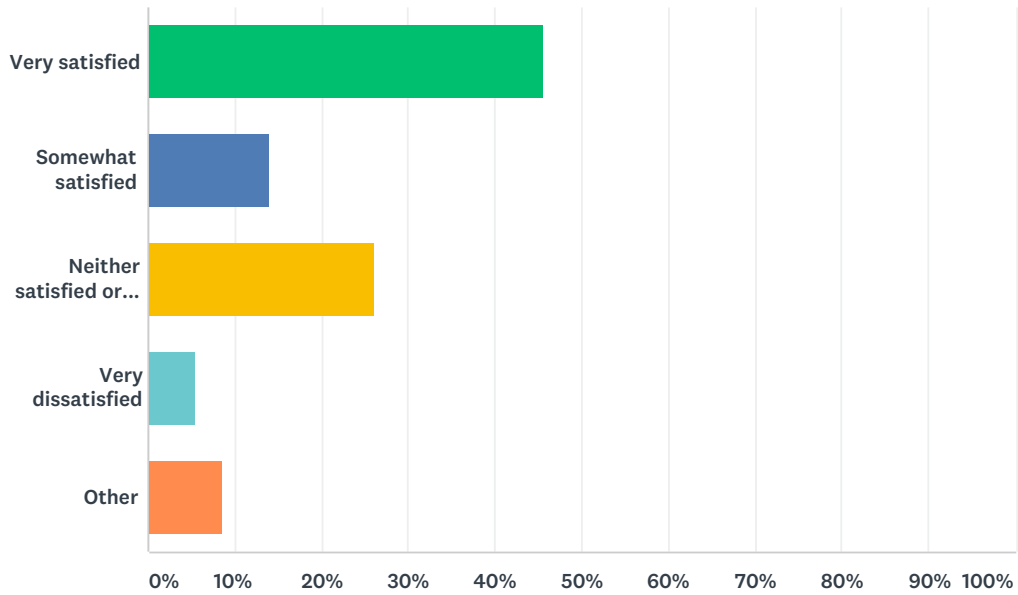
Answered: 659 Skipped: 5



ANSWER CHOICES	RESPONSES	
Very important	42.94%	283
Somewhat important	20.79%	137
Not important	34.29%	226
Not sure	1.97%	13
TOTAL		659

Q5 Generally speaking, are you satisfied or dissatisfied with this service?

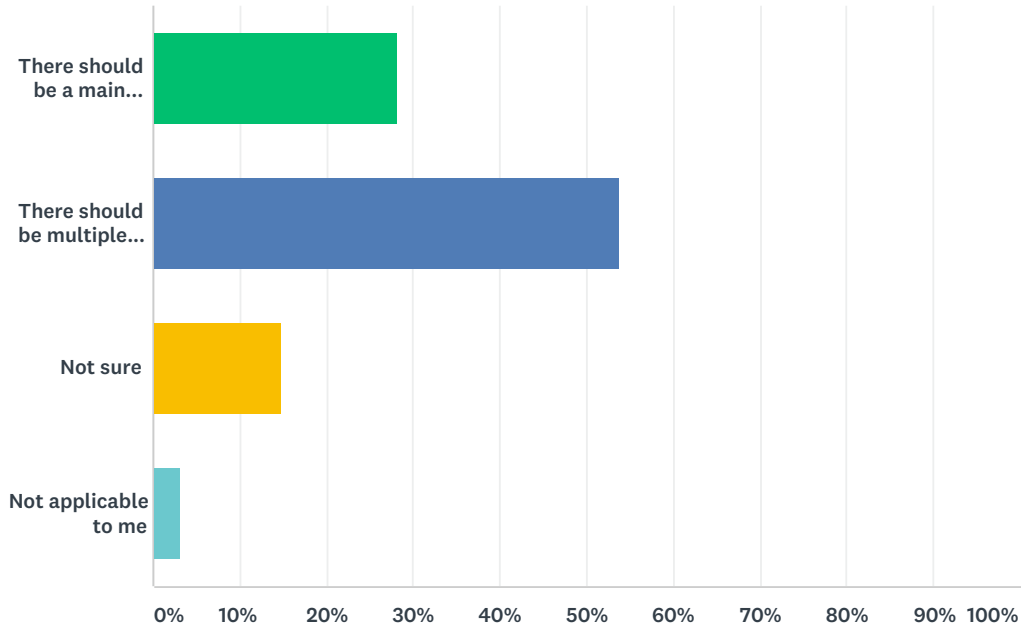
Answered: 659 Skipped: 5



ANSWER CHOICES	RESPONSES	
Very satisfied	45.52%	300
Somewhat satisfied	14.11%	93
Neither satisfied or dissatisfied	26.25%	173
Very dissatisfied	5.46%	36
Other	8.65%	57
TOTAL		659

Q6 If town curbside garbage removal was no longer available to residents of Beech Mountain, what do you think would be a good alternative option to replace it?

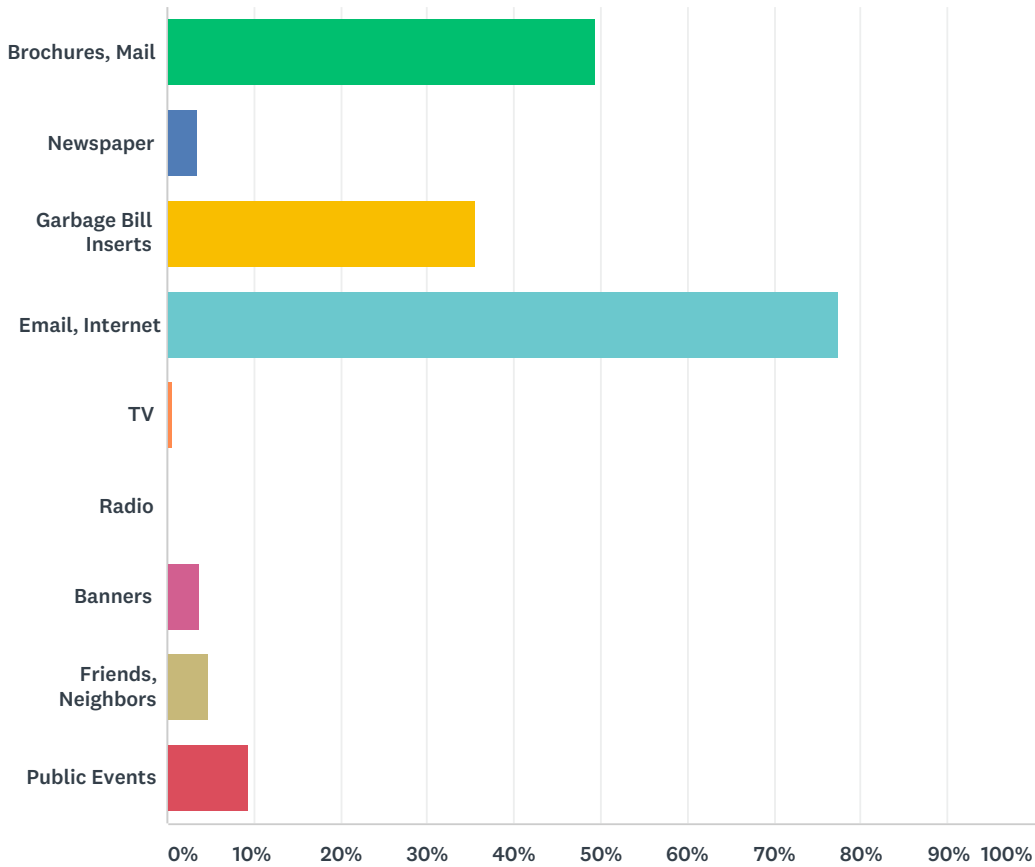
Answered: 655 Skipped: 9



ANSWER CHOICES	RESPONSES	
There should be a main convenience center for the garbage of residents in the town	28.24%	185
There should be multiple convenience center locations for deposit of trash and recyclables.	53.74%	352
Not sure	14.81%	97
Not applicable to me	3.21%	21
TOTAL		655

Q7 From what sources would you prefer to get information about your garbage related services and options? (Select all that apply)

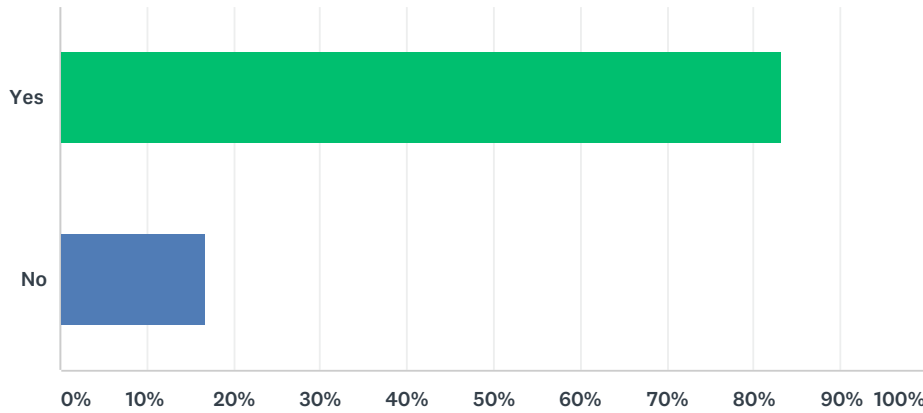
Answered: 658 Skipped: 6



ANSWER CHOICES	RESPONSES	
Brochures, Mail	49.39%	325
Newspaper	3.65%	24
Garbage Bill Inserts	35.56%	234
Email, Internet	77.36%	509
TV	0.61%	4
Radio	0.15%	1
Banners	3.80%	25
Friends, Neighbors	4.71%	31
Public Events	9.42%	62
Total Respondents: 658		

Q8 Are you aware that work performed by contractors is not supposed to be picked up by the Town?

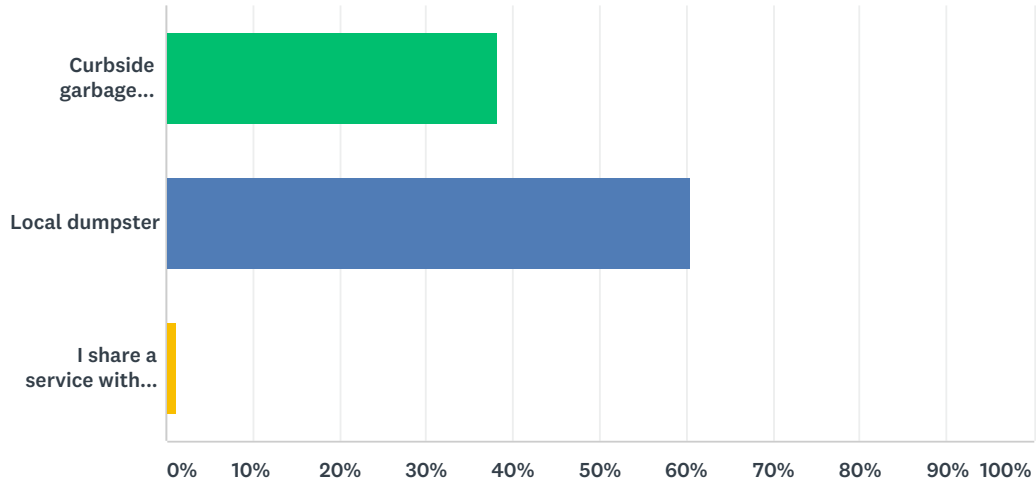
Answered: 657 Skipped: 7



ANSWER CHOICES	RESPONSES	
Yes	83.26%	547
No	16.74%	110
TOTAL		657

Q9 What is your primary disposal method for your solid waste garbage?

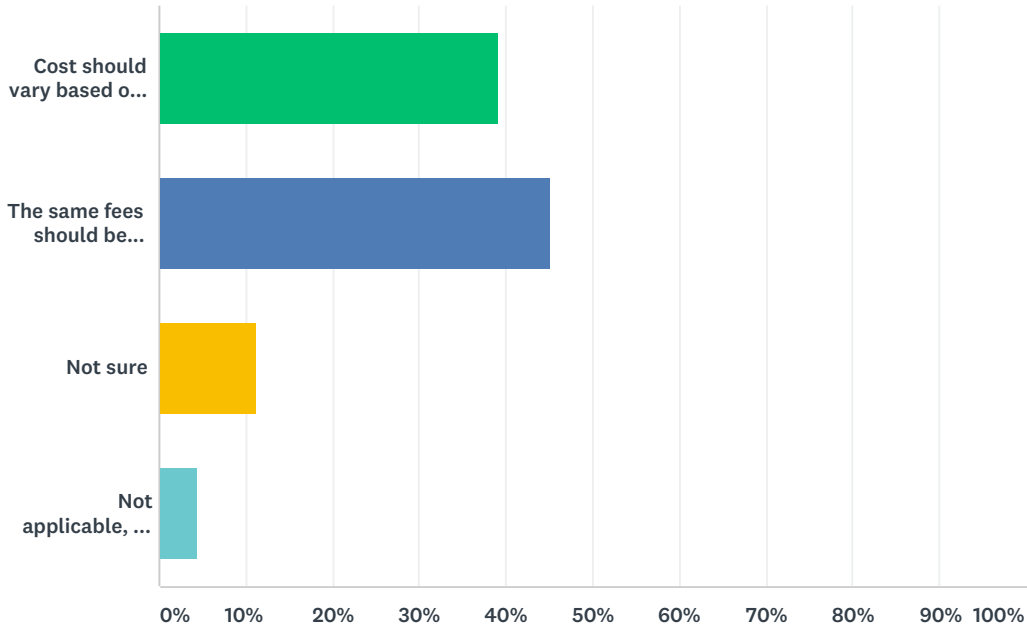
Answered: 651 Skipped: 13



ANSWER CHOICES	RESPONSES	
Curbside garbage collection	38.25%	249
Local dumpster	60.52%	394
I share a service with another household	1.23%	8
TOTAL		651

Q10 Do you think that Beech Mountain garbage collection fees should be based on how much trash a household or business produces, or should collection fees be the same for all residents?

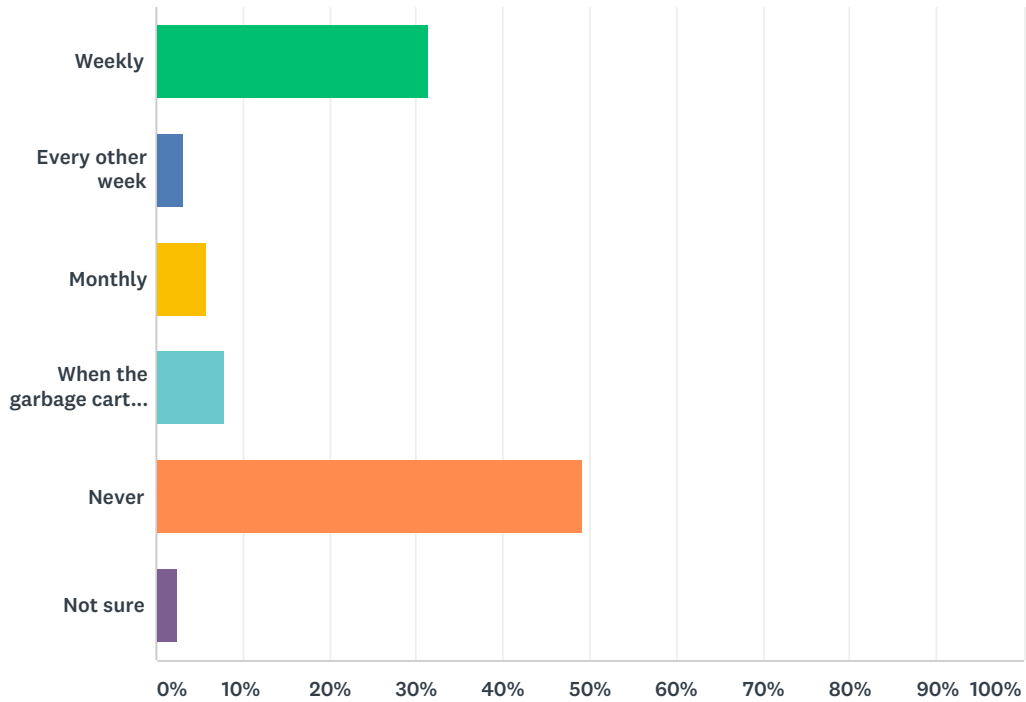
Answered: 659 Skipped: 5



ANSWER CHOICES	RESPONSES	
Cost should vary based on the amount of garbage produced	39.15%	258
The same fees should be charged for everyone	45.22%	298
Not sure	11.23%	74
Not applicable, I do not have garbage collection from the Town of Beech Mountain	4.40%	29
TOTAL		659

Q11 How frequently do you set out your garbage cart for garbage collection?

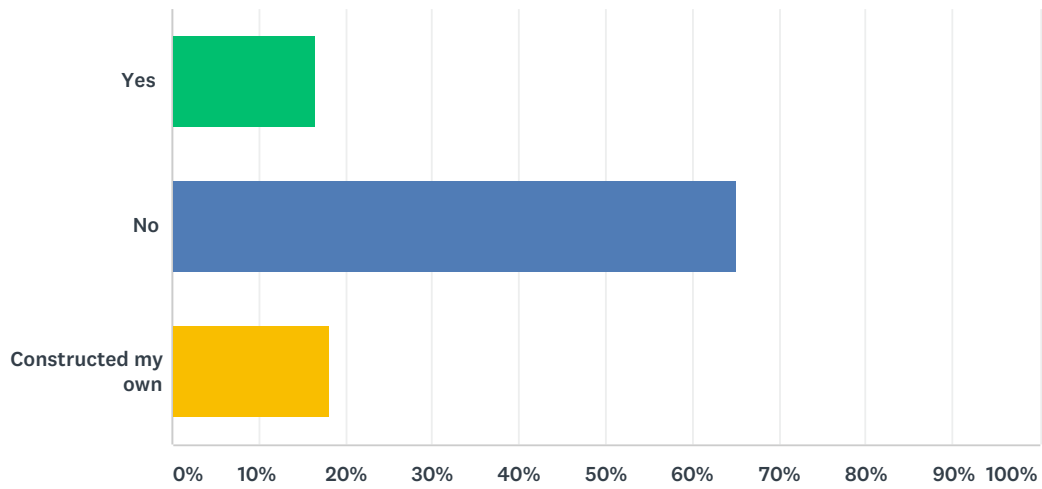
Answered: 660 Skipped: 4



ANSWER CHOICES	RESPONSES	
Weekly	31.36%	207
Every other week	3.18%	21
Monthly	5.76%	38
When the garbage cart gets full	7.88%	52
Never	49.24%	325
Not sure	2.58%	17
TOTAL		660

Q12 Have you purchased a “bear” resistant receptacle to house your containers?

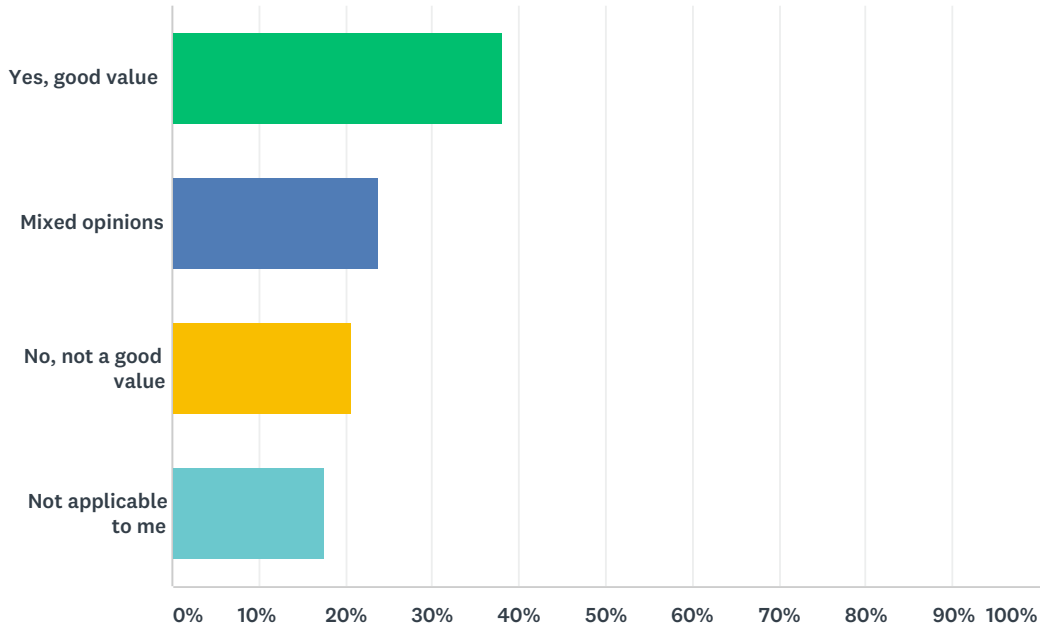
Answered: 656 Skipped: 8



ANSWER CHOICES	RESPONSES	
Yes	16.62%	109
No	65.09%	427
Constructed my own	18.29%	120
TOTAL		656

Q13 If the Town of Beech Mountain provides your weekly collection services, do you think that your weekly garbage collection service is a good value for the money you pay?

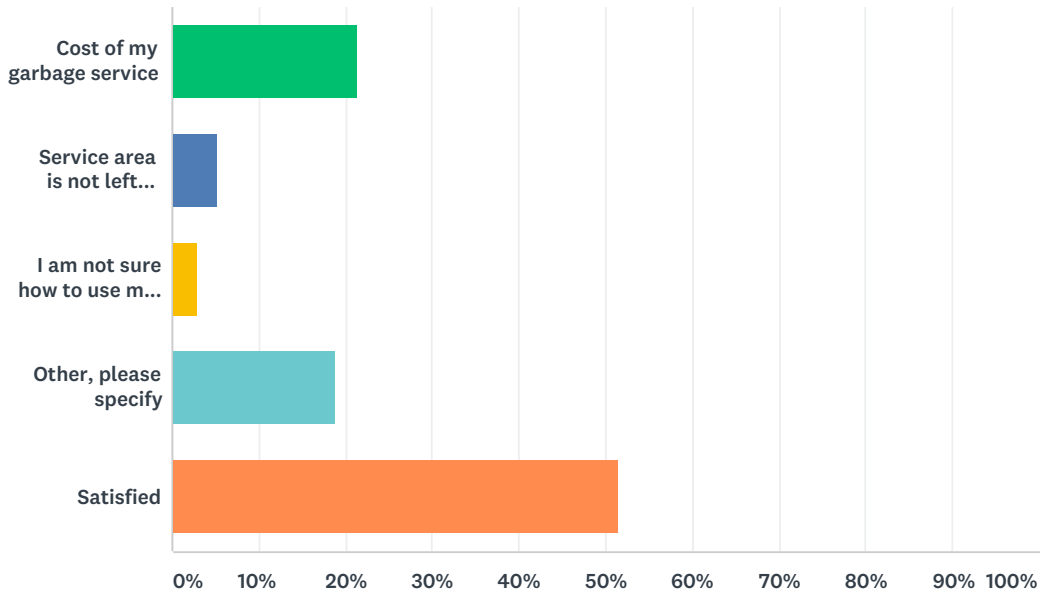
Answered: 655 Skipped: 9



ANSWER CHOICES	RESPONSES	
Yes, good value	38.02%	249
Mixed opinions	23.82%	156
No, not a good value	20.61%	135
Not applicable to me	17.56%	115
TOTAL		655

Q14 If you are dissatisfied, please check any of the following boxes below that apply.

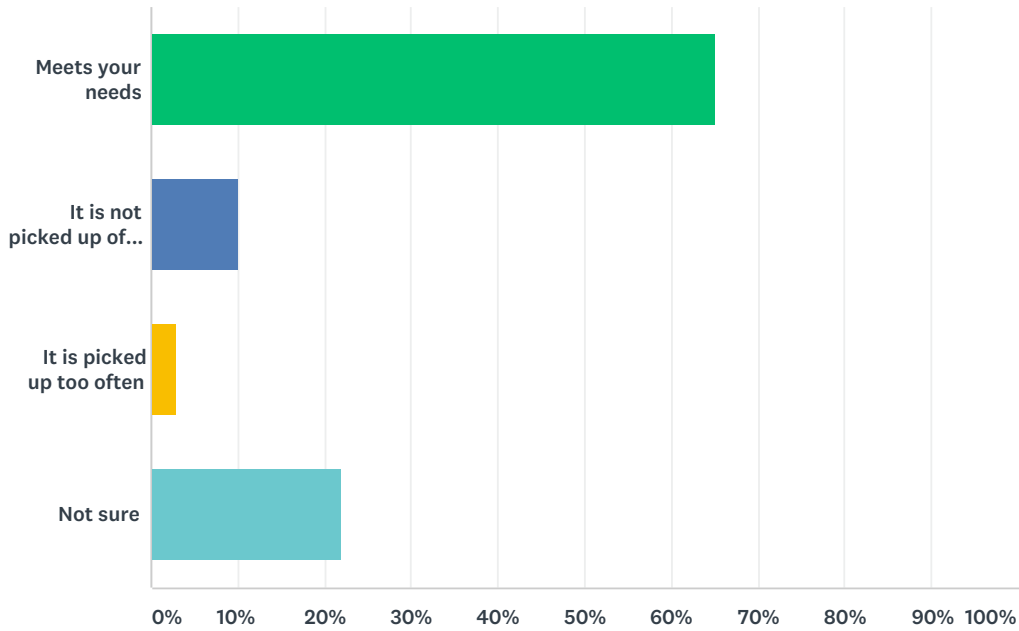
Answered: 530 Skipped: 134



ANSWER CHOICES	RESPONSES	
Cost of my garbage service	21.32%	113
Service area is not left clean after the cart is emptied	5.28%	28
I am not sure how to use my garbage service properly	3.02%	16
Other, please specify	18.87%	100
Satisfied	51.51%	273
TOTAL		530

Q15 Would you say that the frequency of your garbage pickup meets your needs, is not picked up often enough, or is picked up too often?

Answered: 617 Skipped: 47



ANSWER CHOICES	RESPONSES	
Meets your needs	64.99%	401
It is not picked up often enough	10.05%	62
It is picked up too often	2.92%	18
Not sure	22.04%	136
TOTAL		617

Town of Beech Mountain

Request for Council Action

FROM: Daniel Davis
SUBJECT: McGill Associates Additional Water Supply Wells Proposal for Professional Services
TO: Council
DATE: 8/20/2018
REQUESTED BY: Daniel Davis

Public Hearing	<input type="checkbox"/> Yes	<input checked="" type="checkbox"/> No	<input type="checkbox"/> Will be required
Properly Advertised	<input type="checkbox"/> Yes	<input checked="" type="checkbox"/> No	<input type="checkbox"/> Will be required

BACKGROUND:

Request for approval to have West Consultants, Benjie Thomas finalize and closeout the contract for the construction of the Water Treatment Plant upgrade project.

STATEMENT OF PLAN CONSISTENCY:

It is the opinion of staff that the proposed action IS IS NOT consistent with the Comprehensive Plan for Beech Mountain or other officially adopted plan (list if other: _____).

Specifically, this action is in accord with the following sections of the Comprehensive Plan:

Goal PS.G1: Ensure Operational Capability for Emergency Services Departments.

This initiative helps to avoid confusion between addresses and would facilitate better emergency response.

ATTACHMENTS:

McGill Associates Proposal for Services. 6 pages.

STAFF RECOMMENDATIONS:

Staff recommends consent to continue with this proposal.

COUNCIL ACTION:



June 8, 2018

Mr. Robert Heaton, Director of Infrastructure
Town of Beech Mountain
403 Beech Mountain Parkway
Beech Mountain, North Carolina 28604-8012

Re: Additional Water Supply Wells
Proposal for Professional Services

Dear Robert:

First of all I would like to thank you for spending time with Dale and me to discuss the current and long-term plans for the Beech Mountains water supply. I understand from our conversations that one of the potential top priorities for the water supply is a need for additional raw water supply to supplement the current raw water supplied by Buckeye Lake. One of the items we discussed was the development of additional groundwater supply wells.

As you know McGill Associates assisted the town with the siting and development of a single groundwater supply well on the eastern end of Buckeye Lake in 2016. I understand that a pump has been installed into the well, but that the well is not currently being utilized. This is a non-permitted water supply well which would discharge into Buckeye Lake to supplement the natural surface water supply during future drought conditions.

McGill Associates proposes the following scope of services to the Town of Beech Mountain for consideration of development of another water supply well, or wells which would be permitted through Public Water Supply as a water supply well:

1. McGill Associates and our sub-consultant, will review past information available associated with groundwater supply wells in the area. A two day site visit to the area will be made to identify potential well sites. McGill Associates will retain McCall Brothers from Gastonia as our sub-consultant. Mr. Mike Floyd, president of McCall Brothers is a licensed hydrogeologist and has more than 20 years in the well development business and assisted McGill Associates with the siting of the first well.

From the site visit we will identify a maximum of 4 potential well sites.

2. Using available GIS and other land records we will identify the property Owners of the identified potential well sites, property size and dimensions. McGill

Associates will meet with town staff and discuss the identified well sites, property ownership and prioritize those sites for which property accusation or approval from the property owner appears to be possible. The town will be responsible for contacting the subject property owners to gage their interest and willingness to allow the development of a test well on their property.

3. Once the potential well sites are identified McGill Associates will schedule and coordinate a meeting with the Winston-Salem Regional office of Public Water Supply and town staff to discuss the proposed project to drill a number of groundwater supply wells. Prior to the meeting with the WRO of DWR McGill Associates will coordinate the preliminary staking of the potential well sites.
4. McGill Associates recommends that once the well sites are identified and an appropriate site it selected that consideration be given to hiring McCall Brothers to drill one exploratory well on the highest priority site. Prior to drilling we will obtain unit pricing and a budget for the well development from McCall Brothers. A minimum capacity of 125 gpm is recommended for the well. The well construction will include the installation of an appropriately sized steel casing to meet current standards, and 6-inch diameter well not to exceed 800-feet in depth and the completion of a 2-hour air test to determine an estimate of estimated capacity. Once the initial well is drilled and completed additional wells may be developed if deemed appropriate at additional cost to be determined.

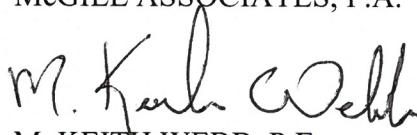
As an alternate we can develop a bid package for the drilling and development of the exploratory wells and assist the Town of Beech Mountain with securing bids for the well development from a list of well construction contractors who have a demonstrated work history in the Beech Mountain area.

Given the nature of this work and the need to identify potential well sites and the town's ability to secure permission from property Owners for the well construction, it is impossible to develop a hard and fast fee at this time. McGill Associates proposes to perform this work on a cost plus basis with actual cost based upon the man-hours required and the Basic Fee schedule made a part of this proposal. For the purpose of establishing a budget we would propose a maximum not to exceed fee of \$12,500 for this initial effort. Note that this maximum not to exceed cost does not include the services in step 4 above.

If this proposal is acceptable please return one signed copy of the proposal for my files. I have provided a location for a signature and the inclusion of the purchase order number below. Should you have any questions please let me know.

Sincerely,

McGILL ASSOCIATES, P.A.



M. KEITH WEBB, P.E.

Vice President

CC: Tim Holloman – town manager
Mike Dowd
Dale Schepers

ACCEPTANCE

Town of Beech Mountain

Tim Holloman - Manager

Date

I/public/keith webb/beechnmountain/new well/rh06june18

BASIC FEE SCHEDULE

September 2017

<u>PROFESSIONAL FEES</u>	<u>Current Rate</u>
Firm Principal	\$190.00
Program Services Manager I	\$150.00
Program Services Manager II	\$160.00
Senior Project Manager I	\$160.00
Senior Project Manager II	\$170.00
Senior Project Manager III	\$175.00
Project Manager I	\$140.00
Project Manager II	\$150.00
Project Engineer I	\$105.00
Project Engineer II	\$115.00
Project Engineer III	\$125.00
Engineering Associate I	\$ 85.00
Engineering Associate II	\$ 90.00
Engineering Technician I	\$ 80.00
Engineering Technician II	\$ 90.00
Engineering Technician III	\$100.00
Environmental Specialist I	\$ 80.00
Environmental Specialist II	\$ 90.00
Electrical Engineer I	\$105.00
Electrical Engineer II	\$115.00
Electrical Engineer III	\$125.00
Electrical Engineering Associate I	\$ 85.00
Electrical Engineering Associate II	\$ 90.00
Electrical Engineering Technician I	\$ 80.00
Electrical Engineering Technician II	\$ 90.00
Electrical Engineering Technician III	\$100.00
Mechanical Engineer I	\$105.00
Mechanical Engineer II	\$115.00
Mechanical Engineer III	\$125.00
Mechanical Engineering Associate I	\$ 85.00
Mechanical Engineering Associate II	\$ 90.00

Mechanical Engineering Technician I	\$ 80.00
Mechanical Engineering Technician II	\$ 90.00
Mechanical Engineering Technician III	\$100.00
CADD Operator I	\$ 75.00
CADD Operator II	\$ 80.00
CADD Operator III	\$ 85.00
Construction Services Manager I	\$120.00
Construction Services Manager II	\$135.00
Construction Administrator I	\$ 90.00
Construction Administrator II	\$100.00
Construction Administrator III	\$110.00
Construction Field Representative I	\$ 75.00
Construction Field Representative II	\$ 80.00
Construction Field Representative III	\$ 85.00
Construction Project Coordinator	\$ 75.00
Planner I	\$ 95.00
Planner II	\$110.00
Planner III	\$125.00
Planner IV	\$135.00
Surveyor I	\$ 80.00
Surveyor II	\$ 90.00
Surveying Associate I	\$ 70.00
Surveying Associate II	\$ 75.00
Survey Technician I	\$ 70.00
Survey Technician II	\$ 75.00
Survey Field Technician I	\$ 55.00
Survey Field Technician II	\$ 60.00
Survey Field Technician III	\$ 65.00
Administrative Assistant (I-II)	\$ 70.00
Administrative Assistant III	\$ 75.00
Accounting Assistant (I-II)	\$ 80.00

1. **EXPENSES**

- a. Mileage - \$0.65/mile
- b. Robotics/GPS Equipment - \$25/hr.
- c. Survey Drone - \$100/hr.
- d. Telephone, reproduction, postage, lodging, and other incidentals shall be a direct charge per receipt.

2. ASSOCIATED SERVICES -

- a. Associated services required by the project such as soil analysis, materials testing, etc., shall be at cost plus ten (10) percent.

**Town of Beech Mountain
Request for Council Action**

FROM: Tim Holloman
SUBJECT: Proposed Amendment to the Official Zoning Map
TO: Mayor and Council
DATE: September 11, 2018
REQUESTED BY:

Public Hearing	<input type="checkbox"/> Yes	<input type="checkbox"/> No	<input checked="" type="checkbox"/> Will be required
Properly Advertised	<input type="checkbox"/> Yes	<input type="checkbox"/> No	<input checked="" type="checkbox"/> Will be required
Public Notice	<input type="checkbox"/> Yes	<input type="checkbox"/> No	<input checked="" type="checkbox"/> Will be required

BACKGROUND:

A Rezoning Application was submitted by Mr. Brett Krueger on behalf of the Slopes Owners Association, owner of 23.1 acres of property along Slopes Road. The request is to rezone the property from R-1 Single-Family Residential to R-3A High Density Multi-Family Residential.

The Planning Board considered this request at the regularly scheduled meeting on August 28, 2018. The Planning Board recommended approval of a Conditional Use District (R-3A PUD). The recommended rezoning would allow the development to move forward, provided it meets the requirements of the PUD Conditional Use Permit outlined in §154.115 through §154.117 of Title XV Land Usage of the Code of Ordinances.

STATEMENT OF PLAN CONSISTENCY:

It is the opinion of staff that the proposed action IS IS NOT consistent with the Comprehensive Plan for Beech Mountain or other officially adopted plan (list if other: _____). Specifically, this action is in accord with the following sections of the Comprehensive Plan:

Staff finds that the proposed rezoning and development is generally consistent with the Town's Comprehensive Plan. Specifically, staff finds the proposal consistent with LU.G1.P1 Follow Smart Growth Principles by allowing for compact building design and increased density in developed areas and creating a range of housing opportunities. The proposal is also found to be consistent with Goal LU.G3 Focus Development toward Existing Commercial and Residential Areas, by allowing for infill development.

ATTACHMENTS:

RZ 2018-01 Slopes Property – Staff Report
RZ 2018-01 Slopes Property – Zoning Map

RZ 2018-01 Slopes Property – Watershed Map
RZ 2018-01 Slopes Property – Aerial Map
RZ 2018-01 Slopes Property – A100 Parking Level Floor Plan
RZ 2018-01 Slopes Property – A101 Level 01 Floor Plan
RZ 2018-01 Slopes Property – A201 Ski Slope Facing Elevation

STAFF RECOMMENDATIONS:

That the Town Council *set a public hearing for the potential adoption of the proposed Zoning Amendment.*

COUNCIL ACTION:

Town of Beech Mountain

Planning Staff Report



Rezoning No. RZ 2018-01		
Meeting Date(s):	Planning Board:	August 28, 2018
	Council First Reading:	September 11, 2018
	Council Public Hearing:	October 9, 2018
Prepared By:	Preston Yates, Planning Director; Elisa MacGoun, Planning Intern	
Applicant(s):	Brett Krueger on behalf of Slopes Owners Association, Owner	
Applicant's Request:	Rezone from the Low Density Residential (R-1) zoning district to the Multi Family- High Density Residential (R-3A) zoning district	
Staff Recommendation:	Conditional Zoning (R-3A Slopes) or Special Use District (R-3A PUD)	

Background Information

The applicant, Brett Krueger, on behalf of the property owner Slopes Owners Association, is requesting to rezone an approximately **23.1 acre** property located on Slopes Road, which sits along the slopes of Ski Beech Resort on the westerly side. The request is to rezone the partially developed property from the Low Density Residential (R-1) zoning district to the Multi Family- High Density Residential (R-3A) zoning district. The purpose of the rezoning is to allow for construction of residential Townhomes. The property is located completely within the Pond Creek WS-II watershed overlay district.

Property Information

	Property Use	Land Use	Zoning
Existing	Cluster SFR	Low Density Residential	R-1
Proposed	36 Townhome Units	Multi-Family High Density Residential	R-3A

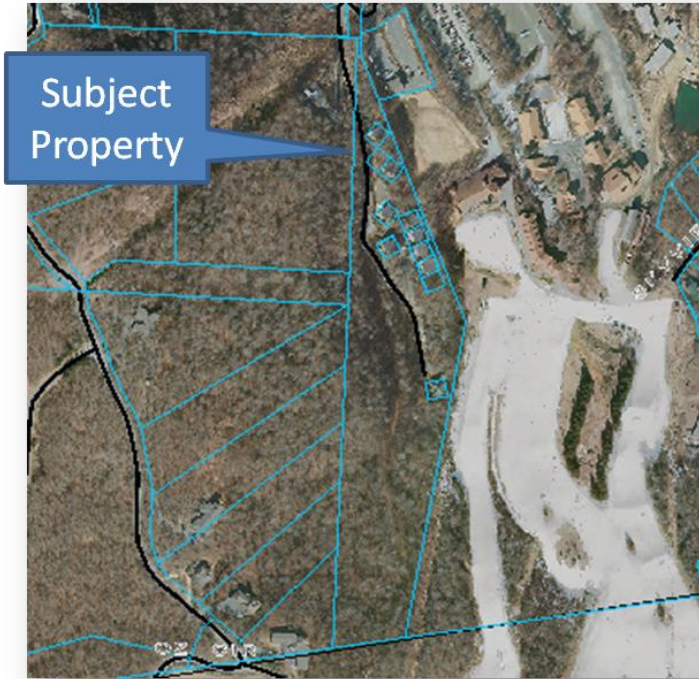
Surrounding Property Information

	Existing Use	Land Use	Zoning
Northeast	Residential	Single-Family Residential	R-2
Northwest	Vacant	Multi-Family High Density Residential	R-3A
South	Vacant	Single Family Residential	R-1
East	Resort	Beech Mountain Resort	BMR
West	Residential	Low Density Single-Family Residential	R-1

Staff Analysis

General Information

The subject property is located along Slopes Road, west of and immediately adjacent to the Beech Mountain Resort property. Originally the property was platted as a cluster-type development of more or less 40 lots of approximately a tenth of an acre each, but was



subsequently recombined into 12 total lots. Eleven of the original cluster-type lots were retained and the remaining lots were recombined into the 23.1 acre subject property. Nine of the 11 cluster lots contain existing residential townhouse structures and two of the lots remain undeveloped.

Water Supply Watershed Protection (WSWP)

The entirety of the 23.1 acre property lies within the Pond Creek WS-II Water Supply Watershed Protection overlay district. The Pond Creek WS-II district is an overlay district as shown on the official Zoning Map primarily intended to maintain a predominantly undeveloped land use intensity pattern. Single-family uses, where permitted, shall be allowed at a

maximum of one dwelling unit per acre on a project by project basis. All other residential and non-residential development shall be allowed a maximum of 12% built-upon area, where permitted.

Rezoning:

The rezoning request is for a conventional rezoning of the subject property from R-1 Low Density Residential to R-3A Multi-Family High Density Residential. The surrounding properties are zoned R-1, R-2, BMR, and R-3A. The existing R-3A zoning lies northwest of the subject property and is separated by a small section of R-2 zoning. As such, this rezoning would be considered a spot zoning, but in the context of the overall zoning map and as a transitional zoning between the higher intensity BMR zoning and the lower intensity R-1 zoning, staff finds the spot zoning acceptable. A comparison of the permitted and conditional uses for R-1 and R-3A zoning districts is included below in Table 1. This rezoning request does not affect the Watershed Protection (Pond Creek WS-II) overlay district, which will remain unchanged and apply to any development of the property.

Table 1: (P = Permitted; C = Allowed as a conditional use; Blank space = Not permitted)

	<i>Single-Family</i>			<i>Multi-Family</i>	
	<i>R-1</i>	<i>R-2</i>	<i>R-2A</i>	<i>R-3A</i>	<i>R-3B</i>
Single-family residential	P	P	P	P	P
Multi-family residential R-3A				P	
Multi-family residential R-3B				P	P
Planned Unit Developments				C	C
Accessory buildings	P	P	P	P	P
Type I group homes	P	P	P	P	P
Public or private non-profit recreational facilities (parks, playgrounds and the like)	P	P	P	P	P
Government protective services	P	P	P	P	P
Public utilities and pumping stations	P	P	P	P	P
Water and sewer plants; water storage tanks	C	C	C	C	C
Noncommercial radio and television towers; satellite dishes	C	C	C	C	C
Telecommunications towers	C				
Campgrounds	C				
Wind Energy System - Commercial	C				
Wind Energy System - Accessory	C	C			
Residential Vacation Rental	P	P	P	P	

Summary

The applicant is requesting a conventional rezoning, which would allow the developer to pursue development of any project allowed by right or conditional use in the R-3A zoning district (see Table 1). The applicant has submitted plans showing a proposed 36 residential unit townhouse structure. However, a conventional zoning classification, does not allow for specific development related conditions to be applied and therefore any plans presented by the applicant would be non-binding to the developer or to the zoning category. Additionally, the Town’s zoning ordinance states: “Neither the Planning Board nor the Town Council shall consider specific development proposals on any property when considering an amendment involving the rezoning of such property”. Because of this and due to the property being partially developed previously, staff is recommending that the Planning Board recommend to the Town Council that the subject property be rezoned to a Special Use or Conditional Use Zoning District, such as R-3A-PUD or to a Conditional Zoning District, such as R-3A-Slopes.

Conditional Use Zoning District (R-3A-PUD)

The conditional use zoning district requires that all uses in that zoning district become conditional uses. For a zoning district of R-3A-PUD all of the permitted and conditional uses of the zoning R-3A zoning district would become conditional uses and in this case a Planned Unit Development. The process for the PUD would require a public Quasi-Judicial hearing before the Board of Adjustment to demonstrate that the applicant has met the requirements of the PUD, as described in the Code of Ordinances. However, the rezoning could move forward to Town Council for approval, as R-3A-PUD.

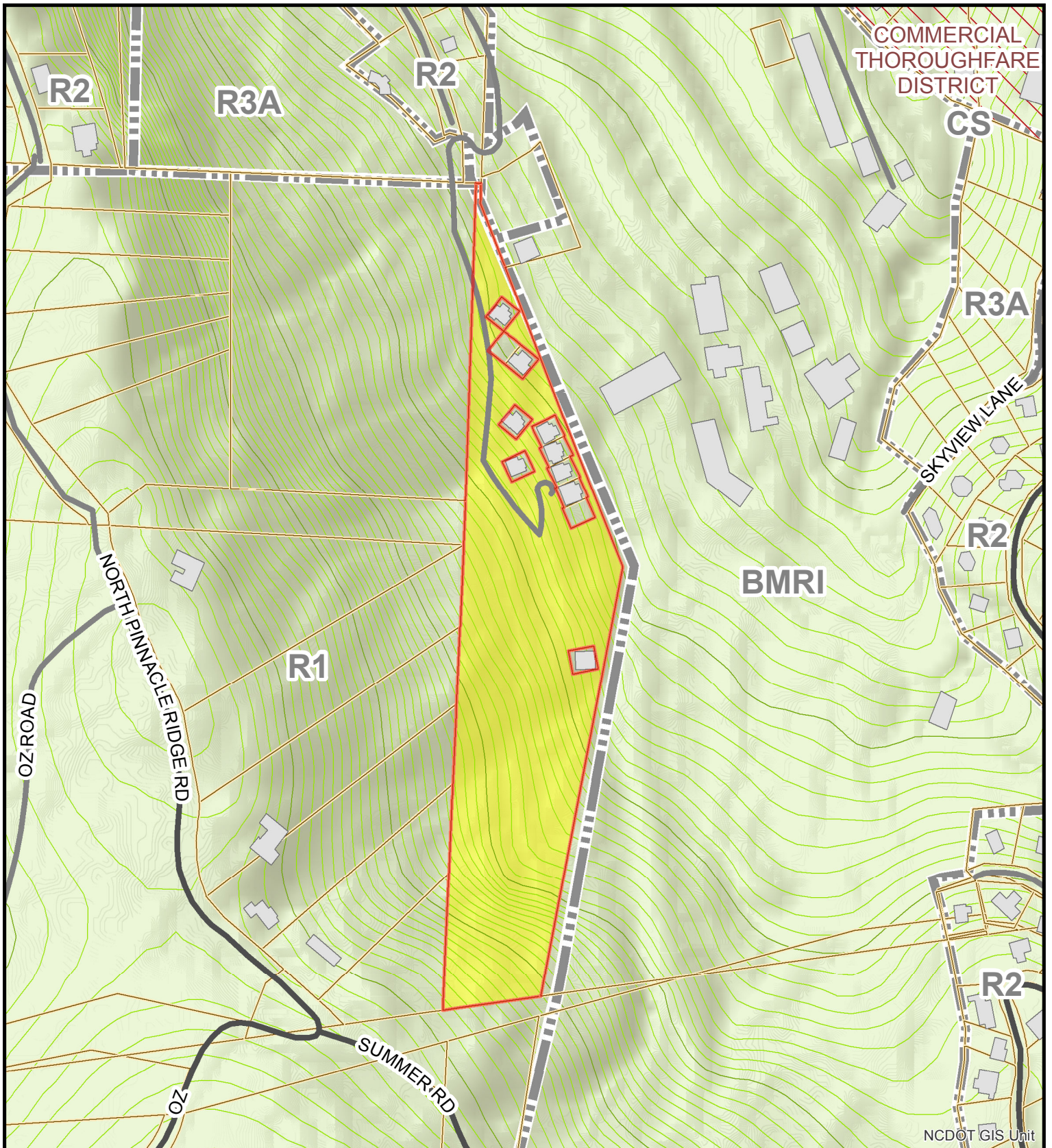
Conditional Zoning District (R-3A-Slopes)

The conditional zoning district allows for project specific conditions to be adopted with the zoning district. Generally, these projects require that the applicant design the project to an

advanced stage and the design documents are then adopted as part of the zoning district as it is established. Staff would recommend that if the Planning Board chooses to pursue this option, that it request the applicant continue the design process and return with further-developed site and building plans. Once the zoning district with the project specific conditions are adopted by the Town Council, the applicant would be allowed to proceed with staff level reviews and approvals and no further public hearings would be required.

Staff finds that the proposed development is generally consistent with the Town's Comprehensive Plan. Specifically, staff finds the proposal consistent with LU.G1.P1 Follow Smart Growth Principles by allowing for compact building design and increased density in developed areas and creating a range of housing opportunities. The proposal is also found to be consistent with Goal LU.G3 Focus Development toward Existing Commercial and Residential Areas, by allowing for infill development.

The Planning Board may recommend approval of the conventional rezoning, as requested by the applicant, recommend approval of the Conditional Use Zoning District (R-3A-PUD) or a Conditional Zoning (R-3A-Slopes), as recommended by staff, or recommend denial of the rezoning.



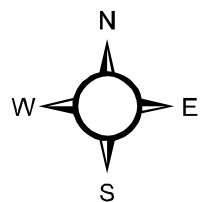
SLOPES REZONING ZONING MAP WITH TERRAIN

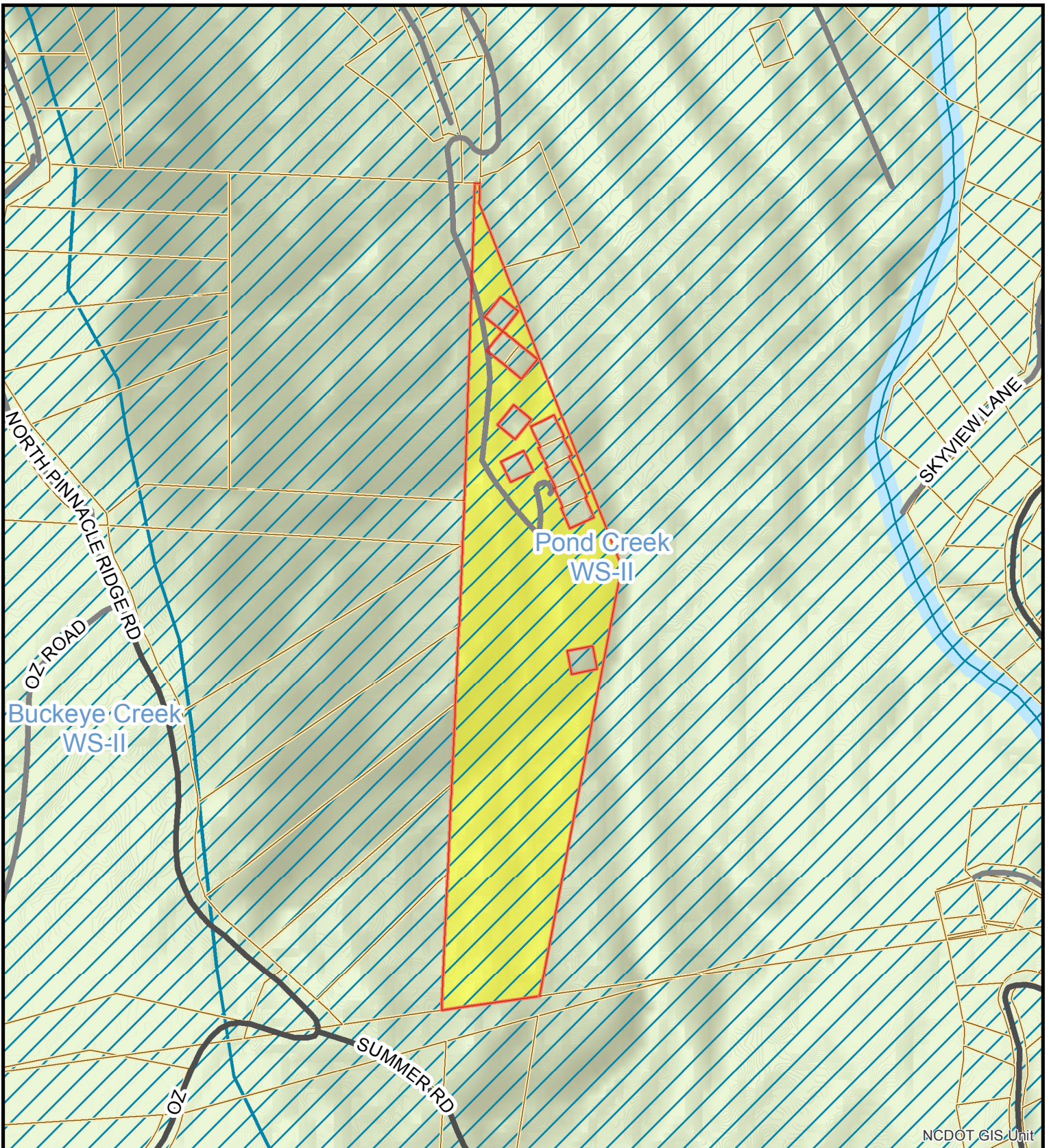
Author: Preston Yates

Date: 7/24/2018

User Name: pyates

This product is for informational purposes and is not suitable for legal, engineering, or surveying purposes. Users of this map and the contents therein are solely responsible for interpretations made from these products. Town of Beech Mountain cannot accept any responsibility for errors, omissions, or positional accuracy. There are no warranties, expressed or implied, including the warranty of merchantability or fitness for a particular purpose, accompanying this product.





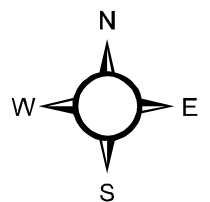
SLOPES REZONING WATERSHED MAP

Author: Preston Yates

Date: 7/24/2018

User Name: pyates

This product is for informational purposes and is not suitable for legal, engineering, or surveying purposes. Users of this map and the contents therein are solely responsible for interpretations made from these products. Town of Beech Mountain cannot accept any responsibility for errors, omissions, or positional accuracy. There are no warranties, expressed or implied, including the warranty of merchantability or fitness for a particular purpose, accompanying this product.





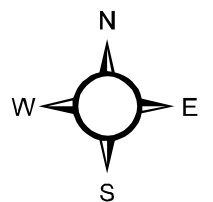
SLOPES REZONING AERIAL MAP (2014)

Author: Preston Yates

Date: 7/24/2018

User Name: pyates

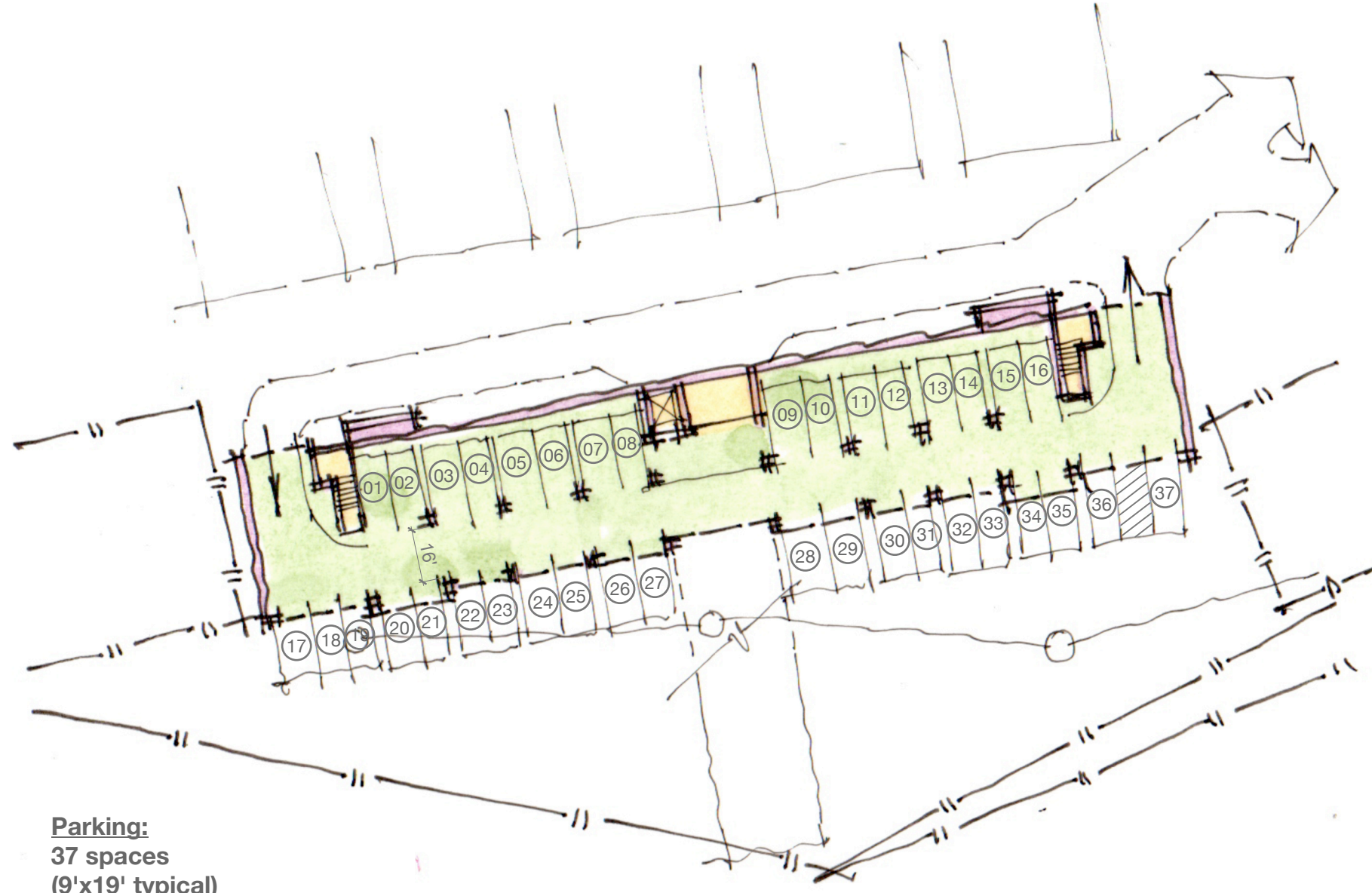
This product is for informational purposes and is not suitable for legal, engineering, or surveying purposes. Users of this map and the contents therein are solely responsible for interpretations made from these products. Town of Beech Mountain cannot accept any responsibility for errors, omissions, or positional accuracy. There are no warranties, expressed or implied, including the warranty of merchantability or fitness for a particular purpose, accompanying this product.



0 300



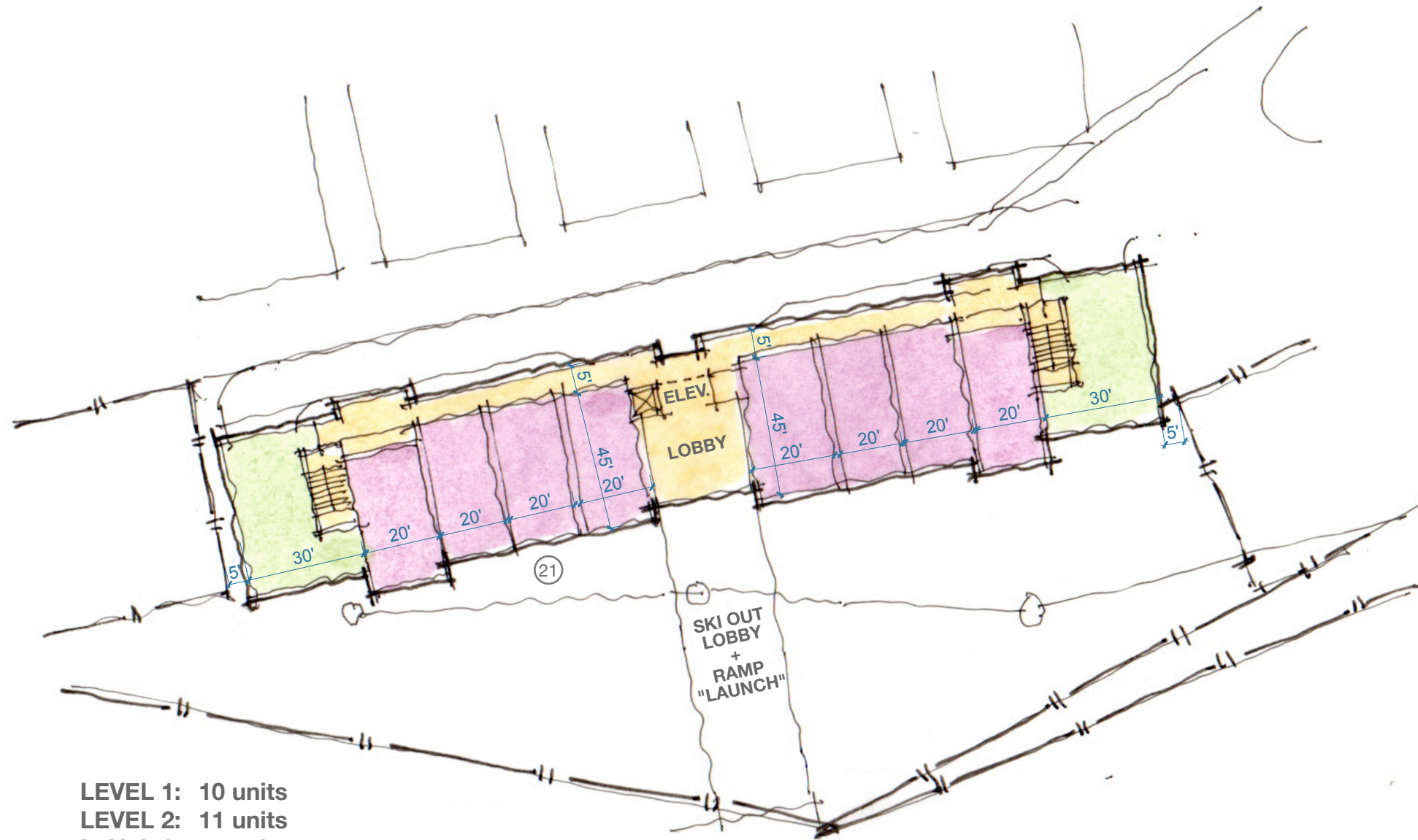
Beech Mountain



Parking:
37 spaces
(9'x19' typical)



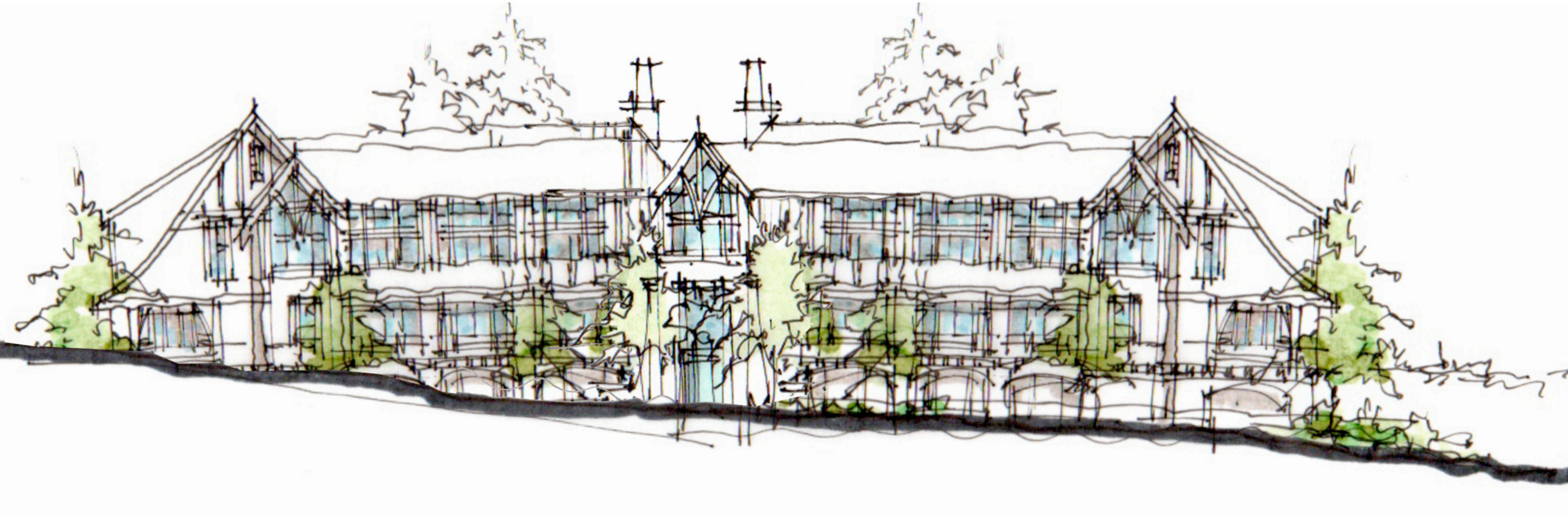
Beech Mountain



LEVEL 1: 10 units
LEVEL 2: 11 units
LEVEL 2: 11 units
32 units



Beech Mountain





STAFF
MONTHLY REPORTS

Report to Town Council

September 2018

Marketing:

The 15th Annual Mile High Kite Festival was a VISIT NC featured event and was promoted throughout the month of August. This year's event was well-attended on Saturday, when the weather was good, though it was cut short on Sunday due to rain.

We continue to use digital ad campaigns and are currently featuring Hike and Wine packages. New ads have been created. Our newest wineries are Villa Nove Vineyards and the Watauga Lake Winery in Butler, Tennessee, bringing our total partners to four.

The Pineapple PR team has begun some Facebook marketing, and we have created stock copy pieces for use in various applications. They were able to nominate the Town of Beech Mountain for Southern Living's 2019 Best Small Town award. Voting is currently underway (participants can vote daily) and can be done here: <https://www.southernliving.com/southsbestvote> Voting takes place through October 9th, so vote early and often.

Most of our visitors to the website in August visited the pages for Things to Do, Lodging, Events, Hiking, Biking, Fishing and the Land of Oz. The Kite Festival and the Hike and Wine specials also brought several visitors to our site.

Results:

Visitors surveyed in the VC were mainly from North Carolina and Florida. This month, we had guests from 15 states and Canada.

Occupancy tax collection was up 13% for August 2018. It totaled \$35,138, compared to \$31,232 collected in the previous year. Some additional funds are beginning to come in from the work that the Tax Office has done to collect occupancy tax from non-reporters; we expect more to be paid over the next month or so.

August visitors to the VC decreased this year, with 645 coming in, compared to 801 in the previous year. Surveys of visitors show that the cooler climate/weather is the number one reason they are visiting Beech Mountain, with hiking and spending time with family also mentioned. One respondent said they were participating in geo caching.

Several of our lodging partners are seeing a trend toward long-term rentals in the summer, with stays of a month or more becoming increasingly common. These visitors are mostly older couples without children, escaping the heat in Florida or eastern North Carolina.

Progress toward Goals

Goal # 1: Support Existing Businesses within the Town of Beech Mountain

- The Hospitality Certification Training will take place September 13th from 9-4 at the Pinnacle Inn Resort conference room; Mayland Community College will provide the certification for frontline staff in tourism-related businesses.
- Began the online Marketing course through University of Oklahoma's Economic Development Certification program.

Goal # 6: Connect Beech Mountain to other tourism and economic development organizations in the area and the state

- Represented Beech Mountain at the Avery County Economic Development Committee meeting, discussed positioning the county as a destination within the High Country

Goal # 7: Enhance marketing and public relations for the Town of Beech Mountain in areas where potential customers reside.

- Continued the familiarization process with The Pineapple Agency, focusing on the highlights of the Town of Beech Mountain, discussing the target markets for different times of the year and different activities
- Worked with Advance Travel and Tourism to create digital campaign materials to tie in with the Pineapple agency's overall marketing plan

Goal # 8: Develop activities to bring visitors during the low-season

- Through the Think Tank meetings, began discussion for a May 2019 spartan-type run with additional activities to bring overnight visitors in an off-month

**BEECH MOUNTAIN FIRE DEPARTMENT
Monthly Report
August 31, 2018**

EVENT	THIS PERIOD	SAME PERIOD LAST YEAR	FISCAL YTD
FIRE CALLS	4	1	20
MEDICAL CALLS	16	8	24
FIRE SAFETY INSPECTIONS	2	1	3
PUBLIC EDUCATION	0	0	2
FIRE HYDRANT INSPECTIONS	0	0	0
TRAINING HOURS	325	184	506
MEETINGS	6	6	11

COMMENTS:

Membership Recruitment Program.

Addressing Project Underway

SCBA Testing Completed

NC Grant

Goals Next Period:

Drivers Training

Fire Safety Inspections

Hose Testing

Town of Beech Mountain
Water Treatment Monthly Operation Report

August 2018 flow totals: 12.62 MG
 .409 MGD AVG
 .318 MGD MIN
 .728 MGD MAX

All Bacteria samples taken were absent of Coliform Bacteria.

All daily tests are in compliance.

Wastewater report for July

Pond Creek Wastewater Treatment Plant

Total Flow	Average	Limit
3.627 mg	0.117 mgd	0.400 mgd

Grassy Gap Wastewater Treatment Plant

Total Flow	Average	Limit
0.806 mg	0.026 mgd	0.080 mgd



Activity Log Yearly Summary Totals
 Beech Mountain Police Department
 January 1, 2018 through August 31, 2018

<i>Call Type</i>	<i>2017</i>	<i>2018</i>	<i>Call Type</i>	<i>2017</i>	<i>2018</i>
Provide Assistance			Traffic Related		
Assist Fire Department	19	29	Driving While Impaired	4	4
Assist Investigation	10	1	Improper Parking	29	26
Assist Other Agency	81	36	Stationary/Directed Patrol	28	46
Assist Town Dept/Business	10	27	Traffic Control	6	4
Assist Home Owner	33	33	Vehicle Accidents	27	32
Assist Motorist	142	198	Vehicle Stops	110	56
Assist Other Officer	111	47			
Escort	210	307	Law Enforcement Calls		
Medical Calls	40	31	911 Hang Ups	27	17
			Alarms	75	75
Daily Checks			Breaking & Entering	5	6
Business Checks	7,122	7,540	Domestic Complaints	19	19
Care Track Test	1	42	Fight	0	3
Security Checks	1,308	645	Fire Works Violations	12	2
Residence Checks	1,362	482	Fraud	2	1
Welfare Check	30	35	Hit & Run	3	1
			Intoxicated/Drunk & Disruptive	11	2
Service Calls			Investigation	11	16
Animal Control Domestic/Wildlife	31	42	Larceny	11	16
Calls For Service	151	188	Mental Subject	2	5
Deliver Letter/Message	20	24	Missing Person	13	1
Found Property	4	2	Noise Disturbance/Loud Music	11	22
Other	0	0	Open Door/Open Window	13	12
Recreation/Town Deposit	61	68	Prowler	0	6
			Shots Fired/Sound of Shots Fired	8	2
Action Taken			Ski Pass Violation	0	0
Court	22	15	Suspicious Vehicle	24	44
Felony Arrest	4	1	Trespassing	35	40
Misdemeanor Arrest	15	1	Vandalism	5	6
State Citations	43	40			
Town Ordinance Violations	4	4	Community Policing		
Verbal Warning	51	41	Community Policing Contacts	1,142	2,680
Warning Citations	10	6	Community Events	31	16
Warrant Service	7	2			
2017 Event Totals:	12,611		2018 Event Totals:	13,095	



Town of Beech Mountain
Public Works Department
Monthly Report

2017	SOLID WASTE	RECYCLING							--ROAD MAINTENANCE--					
			PAPER	PLASTIC	GLASS	ALUMINUM	CARDBOARD	ROADS GRADED	STABILIGING STONE	POT HOLES REPAIRED	WASH OUTS	DITCHES PULLED	ROADWAYS MOWED	
JANUARY	104.77		1.01	0.46	3.95	0.40	0	1						
FEBRUARY	79.33		0.47	0.25	0.00	0.00	23	2						
MARCH	80.02		1.52	0.43	0.00	0.00	0	1						
APRIL	63.49		0.58	0.25	3.99	0.29	0	22						
MAY	88.87		1.50	0.49	0.00	0.00	16	23						
JUNE	115.82		2.21	3.45	4.20	0.86	0	34						
JULY	139.56		1.23	1.12	4.17	0.73	0	30	1	0	8	2	27	
AUGUST	124.48		2.07	1.20	4.36	0.41	26	39	0	0	7	0	8	
SEPTEMBER														
OCTOBER														
NOVEMBER														
DECEMBER														
YTD TOTALS	796.34	N/A	10.59	7.65	20.67	2.69	65	152	1	0	15	2	35	
2018	SOLID WASTE	CONSTRUCTION MATERIAL	RECYCLING						--ROAD MAINTENANCE--					
			RECYCLED METAL	PAPER	PLASTIC	GLASS	ALUMINUM	CARDBOARD	ROADS GRADED	STABILIGING STONE	POT HOLES REPAIRED	WASH OUTS	DITCHES PULLED	ROADWAYS MOWED
JANUARY	94.70	12.82	1.16	0.85	0.76	3.53	1.02	22	0	0	0	0	0	0
FEBRUARY	83.37	8.50	1.95	0.66	0.51	0.00	0.00	0	0	0	0	0	0	0
MARCH	48.34	9.45	2.69	0.48	0.24	0.00	0.00	0	0	0	0	0	0	0
APRIL	63.45	12.86	1.91	1.45	0.44	2.84	1.11	0	0	0	10	0	0	9
MAY	76.17	15.97	2.30	0.87	0.46	0.00	0.00	18	22	1	8	5	0	53
JUNE	107.85	20.24	6.90	1.83	1.14	4.08	1.14	8	7	0	3	10	1	31
JULY	129.38	19.42	2.39	1.16	1.04	3.57	0.65	15	4	1	10	0	0	25
AUGUST	110.16	22.22	4.68	0.98	0.86	3.59	0.89	0	27	0	7	6	0	6
SEPTEMBER														
OCTOBER														
NOVEMBER														
DECEMBER														
YTD TOTALS	713.42	121.48	23.98	8.28	5.45	17.61	4.81	63	60	2	38	21	1	124

Note: Sanitation & Recycling amounts are reported in tonnage
 Note: Recycled metal taken to Omni Source
 Note: Cardboard is by bales - each bale is approx 900 lbs.
 Note: Began tracking construction material Jan 2018
 Note: Construction material is charged at \$53.00 per ton

TOWN OF BEECH MOUNTAIN						
Monthly Report						
Department of Building Inspections						
July-2018						
1. Number of Inspections						
	This Month	Last Month	Same Month Last Year	This Fiscal Year to Date	Last Fiscal Year to Date	Calendar Year to Date
Building	31	39	44	70	65	159
Electrical	14	5	5	19	10	75
Plumbing	9	1	8	10	12	49
Htg/Air & Misc.	8	15	13	23	17	72
2. Permits Issued						
No. Issued	22	26	30	48	57	120
Value	186,454.00	438,422.50	511,997.82	624,877	950,420.32	2,950,117
Permit Fees	3,971.44	2,897.40	5,925.00	6,869	8,822.40	28,535
3. Nature of Building Permits						
# of Permits	Type	Address	Total Fees	Valuation	New Bldgs FY to Date	New Bldgs Last FY to Date
	New Single Family				0	7
	New Multi-Family				0	0
	New Commercial				0	0
22	Other	Various	3,971.44	186,454.00		
22			3,971.44	186,454.00		
4. Notable Permits						
Type	Address	Description			Valuation	Fees
5. Building Valuation						
This Fiscal Year to Date:		624,876.50		This Calendar Year to Date:		2,950,117.26
Last Fiscal Year to Date:		950,420.32		Last Calendar Year to Date:		194,680.00

BEECH

PARKS & RECREATION

August Recreation Report

Facility Report

Finance Report

Total Monthly Revenue (itemized attached)	\$19,444.10
---	-------------

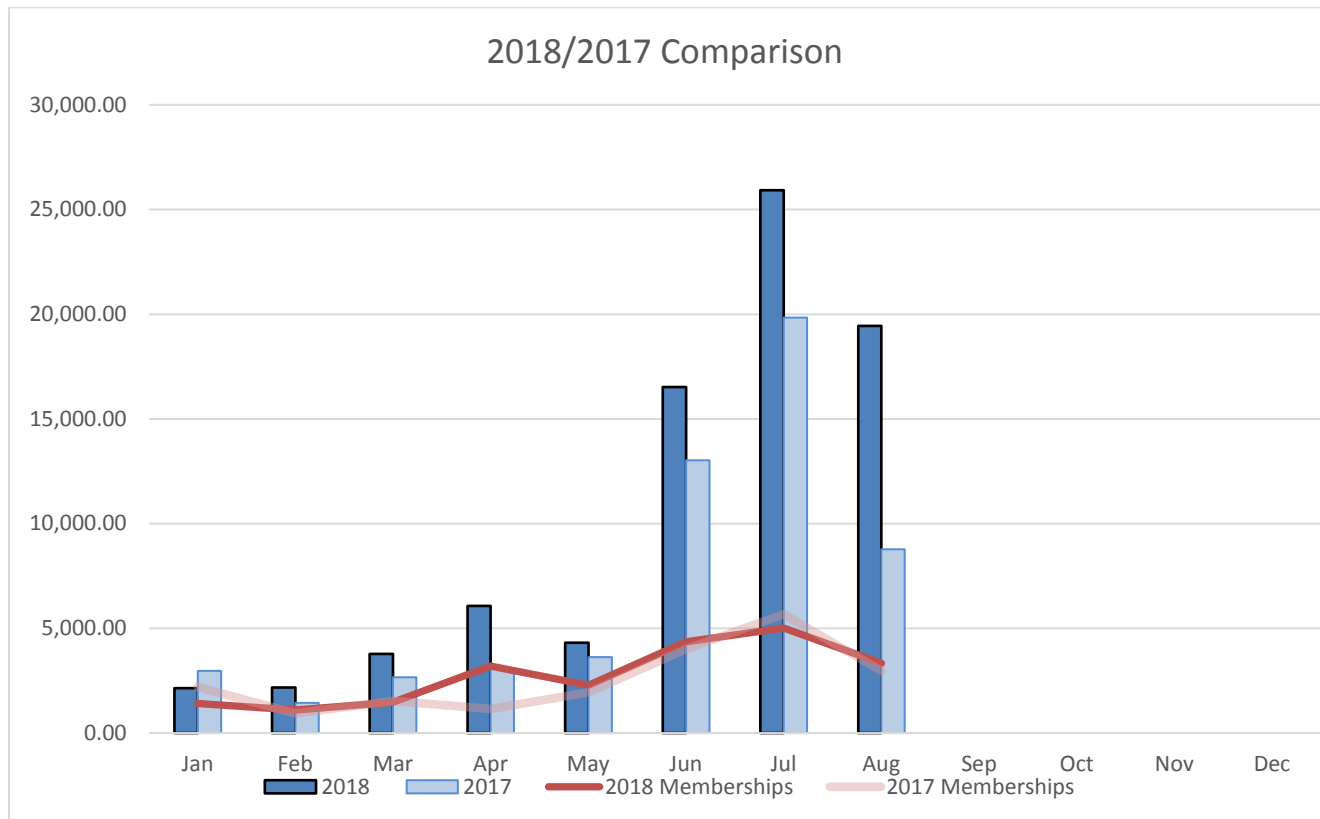
Check-In Report

Member Visits	869
Non-Member Visits	293

Membership Report

Total Memberships - \$3174.00 (Details attached)

New Primaries	19
All New	34
Primary Renewals	17
All Renewals	43
Active Primaries	240
All Active	464

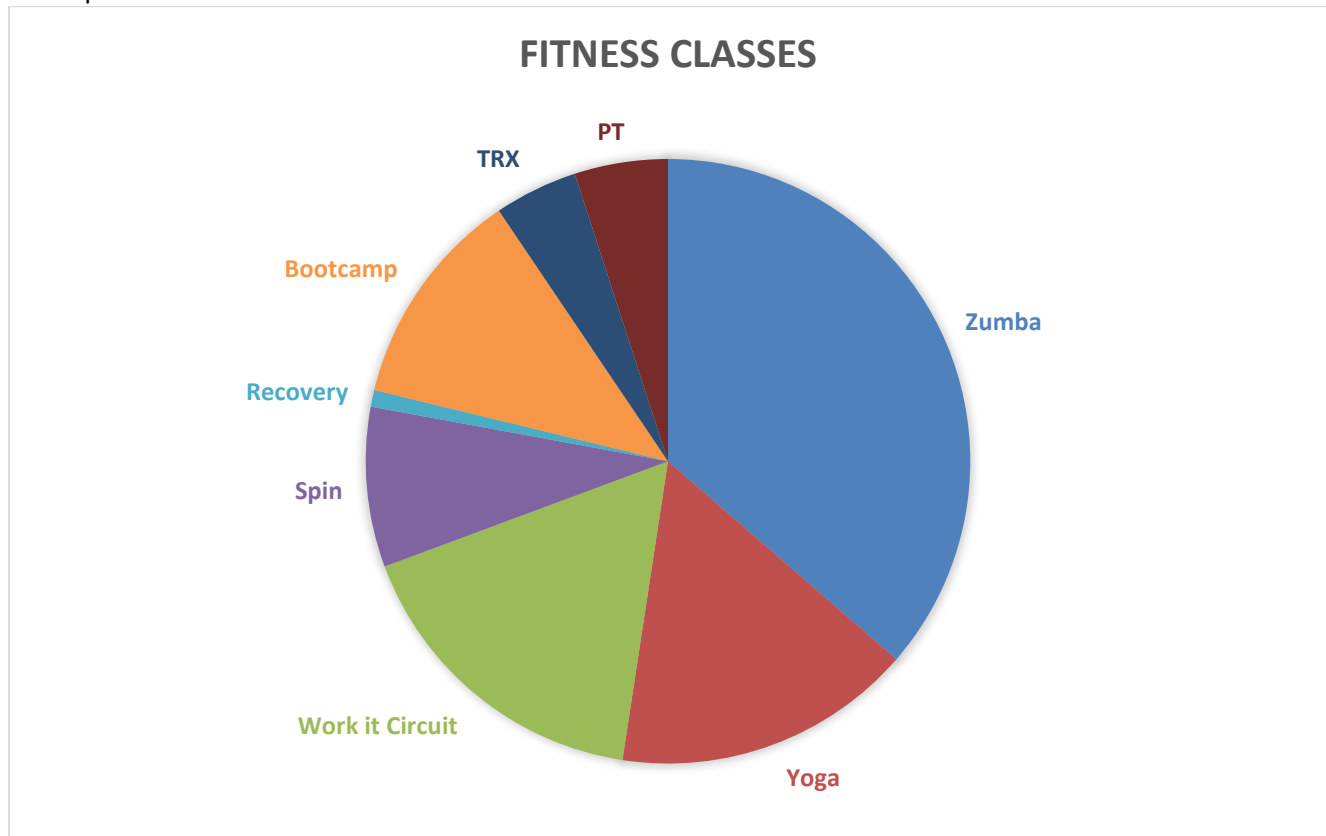


Facility Report Notes -

1. Membership numbers have been skewed based on inconsistent date entry. Currently working on correcting all memberships, multiple primaries in household.
2. Facility Rental: 2/\$780.00

Fitness Report

Participants: 561



Zumba (14)	204 participants	Recovery(5)	5 participants
Yoga(9)	90 participants	Bootcamp(9)	66 participants
Work it Circuit(14)	95 participants	TRX(5)	25 participants
Spin(18)	48 participants	PT	28

Fitness Notes:

- Alexa, Jared, Kate – Teach classes
- Jared and Kate – PT
- Replaced needed parts on spin bikes
- New cardio equipment has arrived.
- Afternoon Spin and Recovery will be taken off the schedule for September.

Outdoor Report

Participants: 186

EMO Trail Count (counter at trail head)	3352
Guided Fishing (2)	\$125.00

Guided Mtn. Biking	0
Guided Hikes (1)	9
Xterra Trail Run	0
Stream Ecology and Salamander Program	2
Beech Mountain Enduro	168 racers
Mushroom Hike with Hannah Starling	7

Notes/ Projects:

1. Binoculars - \$8.50
2. One guided hikes was cancelled
3. Handrails finished on Lower Pond Creek entrance bridge
4. Wicked Witch bike trail completed and open

Respectfully Submitted,

Sean Royall
Recreation Director
Town of Beech Mountain
September 4, 2018

Revenue By Period - Detail

Start Date: 8/1/2018 12:00 AM

End Date: 8/31/2018 11:59 PM

Payment Methods: CA, CK, CC, IC, EC, CR

Revenue Totals

	**Gross	**Net	DEBITS								CREDITS			
			Cash	Check	CC (Gross)	CC (Net)	ACH (Gross)	ACH (NET)	Internal CC	Acct Credit	Other	Refunds	Other	
PROGRAM REGISTRATIONS	\$13,285.00	\$13,285.00	\$125.00	\$13,120.00	\$40.00	\$40.00	\$0.00	\$0.00	\$0.00	\$0.00	\$0.00	\$0.00	\$0.00	\$0.00
MEMBERSHIPS	\$3,331.50	\$3,331.50	\$115.00	\$405.00	\$2,636.50	\$2,636.50	\$0.00	\$0.00	\$175.00	\$0.00	\$0.00	\$0.00	\$0.00	\$0.00
FACILITY RESERVATIONS	\$780.00	\$780.00	\$0.00	\$720.00	\$60.00	\$60.00	\$0.00	\$0.00	\$0.00	\$0.00	\$0.00	\$0.00	\$0.00	\$0.00
(SECURITY DEPOSITS)	\$150.00	\$150.00	\$0.00	\$150.00	\$0.00	\$0.00	\$0.00	\$0.00	\$0.00	\$0.00	\$0.00	\$0.00	\$0.00	\$0.00
POS	\$1,897.60	\$1,897.60	\$1,228.60	\$0.00	\$669.00	\$669.00	\$0.00	\$0.00	\$0.00	\$0.00	\$0.00	\$0.00	\$0.00	\$0.00
OTHER PAYMENTS	\$0.00	\$0.00	\$0.00	\$0.00	\$0.00	\$0.00	\$0.00	\$0.00	\$0.00	\$0.00	\$0.00	\$0.00	\$0.00	\$0.00
HOUSEHOLD ACCOUNT CREDIT	\$0.00	\$0.00	0.00	0.00	0.00	0.00	0.00	0.00	0.00	0.00	\$0.00	0.00	\$0.00	\$0.00
	\$19,444.10	\$19,444.10	\$1,468.60	\$14,395.00	\$3,405.50	\$3,405.50	\$0.00	\$0.00	\$175.00	\$0.00	\$0.00	\$0.00	\$0.00	\$0.00

** Difference between GROSS and NET calculation is that NET uses CC (Net) value instead of CC (Gross) value

Sales Tax

SALES TAX COLLECTED

	\$0.00	\$0.00	\$0.00	\$0.00	\$0.00	\$0.00	\$0.00	\$0.00	\$0.00	\$0.00	\$0.00	\$0.00	\$0.00	\$0.00
--	---------------	---------------	--------	--------	--------	--------	--------	--------	--------	--------	--------	--------	--------	--------

Revenue By Period - Detail

Start Date: 8/1/2018 12:00 AM

End Date: 8/31/2018 11:59 PM

Payment Methods: CA, CK, CC, IC, EC, CR

<u>Programs</u>		DEBITS									CREDITS	
<u>Gross</u>	<u>Net</u>	<u>Cash</u>	<u>Check</u>	<u>CC (Gross)</u>	<u>CC (Net)</u>	<u>ACH (Gross)</u>	<u>ACH (Net)</u>	<u>Internal CC</u>	<u>Acct Credit</u>	<u>Other</u>	<u>Refunds</u>	<u>Other</u>
2018 Holiday Market												
\$120.00	\$120.00	\$0.00	\$120.00	\$0.00	\$0.00	\$0.00	\$0.00	\$0.00	\$0.00	0.00	\$0.00	0.00
2018 Summer Camp Week 1												
\$0.00	\$0.00	\$0.00	\$0.00	\$0.00	\$0.00	\$0.00	\$0.00	\$0.00	\$0.00	0.00	\$0.00	0.00
2018 Summer Camp Week 4												
\$90.00	\$90.00	\$0.00	\$90.00	\$0.00	\$0.00	\$0.00	\$0.00	\$0.00	\$0.00	0.00	\$0.00	0.00
2018 Summer Camp Week 5												
\$40.00	\$40.00	\$0.00	\$0.00	\$40.00	\$40.00	\$0.00	\$0.00	\$0.00	\$0.00	0.00	\$0.00	0.00
2018 Summer Camp Week 6												
\$0.00	\$0.00	\$0.00	\$0.00	\$0.00	\$0.00	\$0.00	\$0.00	\$0.00	\$0.00	0.00	\$0.00	0.00
Enduro												
\$12,910.00	\$12,910.00	\$0.00	\$12,910.00	\$0.00	\$0.00	\$0.00	\$0.00	\$0.00	\$0.00	0.00	\$0.00	0.00
Guided Fishing												
\$125.00	\$125.00	\$125.00	\$0.00	\$0.00	\$0.00	\$0.00	\$0.00	\$0.00	\$0.00	0.00	\$0.00	0.00

Revenue By Period - Detail

Start Date: 8/1/2018 12:00 AM

End Date: 8/31/2018 11:59 PM

Payment Methods: CA, CK, CC, IC, EC, CR

Memberships

	DEBITS										CREDITS		
	Gross	Net	Cash	Check	CC (Gross)	CC (Net)	ACH (Gross)	ACH (Net)	Internal CC	Acct Credit	Other	Refunds	Other
Family Annual Pass													
	\$2,396.50	\$2,396.50	\$0.00	\$315.00	\$1,906.50	\$1,906.50	\$0.00	\$0.00	\$175.00	\$0.00	0.00	\$0.00	0.00
Family Week Pass													
	\$125.00	\$125.00	\$25.00	\$0.00	\$100.00	\$100.00	\$0.00	\$0.00	\$0.00	\$0.00	0.00	\$0.00	0.00
Individual Annual Pass													
	\$810.00	\$810.00	\$90.00	\$90.00	\$630.00	\$630.00	\$0.00	\$0.00	\$0.00	\$0.00	0.00	\$0.00	0.00

Facilities

	DEBITS										CREDITS		
	Gross	Net	Cash	Check	CC (Gross)	CC (Net)	ACH (Gross)	ACH (Net)	Internal CC	Acct Credit	Other	Refunds	Other
Multipurpose Room - 1/2 A													
	\$0.00	\$0.00	\$0.00	\$0.00	\$0.00	\$0.00	\$0.00	\$0.00	\$0.00	\$0.00	0.00	\$0.00	0.00
Security Deposit:													
	\$0.00	\$0.00	\$0.00	\$0.00	\$0.00	\$0.00	\$0.00	\$0.00	\$0.00	\$0.00	0.00	\$0.00	0.00
Multipurpose Room - Whole													
	\$280.00	\$280.00	\$0.00	\$220.00	\$60.00	\$60.00	\$0.00	\$0.00	\$0.00	\$0.00	0.00	\$0.00	0.00
Security Deposit:													
	\$150.00	\$150.00	\$0.00	\$150.00	\$0.00	\$0.00	\$0.00	\$0.00	\$0.00	\$0.00	0.00	\$0.00	0.00

Revenue By Period - Detail

Start Date: 8/1/2018 12:00 AM

End Date: 8/31/2018 11:59 PM

Payment Methods: CA, CK, CC, IC, EC, CR

Pickleball Court 1

\$500.00 **\$500.00** \$0.00 \$500.00 \$0.00 \$0.00 \$0.00 \$0.00 \$0.00 \$0.00 \$0.00 0.00 **\$0.00** **0.00**

Security Deposit:

\$0.00 **\$0.00** \$0.00 \$0.00 \$0.00 \$0.00 \$0.00 \$0.00 \$0.00 \$0.00 \$0.00 0.00 **\$0.00** **0.00**

Pickleball Court 2

\$0.00 **\$0.00** \$0.00 \$0.00 \$0.00 \$0.00 \$0.00 \$0.00 \$0.00 \$0.00 \$0.00 0.00 **\$0.00** **0.00**

Security Deposit:

\$0.00 **\$0.00** \$0.00 \$0.00 \$0.00 \$0.00 \$0.00 \$0.00 \$0.00 \$0.00 \$0.00 0.00 **\$0.00** **0.00**

Pickleball Court 3

\$0.00 **\$0.00** \$0.00 \$0.00 \$0.00 \$0.00 \$0.00 \$0.00 \$0.00 \$0.00 \$0.00 0.00 **\$0.00** **0.00**

Security Deposit:

\$0.00 **\$0.00** \$0.00 \$0.00 \$0.00 \$0.00 \$0.00 \$0.00 \$0.00 \$0.00 \$0.00 0.00 **\$0.00** **0.00**

Pickleball Court 4

\$0.00 **\$0.00** \$0.00 \$0.00 \$0.00 \$0.00 \$0.00 \$0.00 \$0.00 \$0.00 \$0.00 0.00 **\$0.00** **0.00**

Security Deposit:

\$0.00 **\$0.00** \$0.00 \$0.00 \$0.00 \$0.00 \$0.00 \$0.00 \$0.00 \$0.00 \$0.00 0.00 **\$0.00** **0.00**

POS

DEBITS

CREDITS

Gross Net Cash Check CC (Gross) CC (Net) ACH (Gross) ACH (Net) Internal CC Acct Credit Other Refunds Other

Binoculars (Location: 11)

\$8.50 **\$8.50** \$8.50 \$0.00 \$0.00 \$0.00 \$0.00 \$0.00 \$0.00 \$0.00 \$0.00 0.00 **\$0.00** **0.00**

Revenue By Period - Detail

Start Date: 8/1/2018 12:00 AM

End Date: 8/31/2018 11:59 PM

Payment Methods: CA, CK, CC, IC, EC, CR

Canoe Donation (Location: 11)													
\$31.75	\$31.75	\$31.75	\$0.00	\$0.00	\$0.00	\$0.00	\$0.00	\$0.00	\$0.00	\$0.00	0.00	\$0.00	0.00
Coke Machine (Location: 11)													
\$189.00	\$189.00	\$189.00	\$0.00	\$0.00	\$0.00	\$0.00	\$0.00	\$0.00	\$0.00	\$0.00	0.00	\$0.00	0.00
Daily Use (Location: 11)													
\$879.00	\$879.00	\$750.00	\$0.00	\$129.00	\$129.00	\$0.00	\$0.00	\$0.00	\$0.00	\$0.00	0.00	\$0.00	0.00
Dog Park Donations (Location: 11)													
\$74.35	\$74.35	\$74.35	\$0.00	\$0.00	\$0.00	\$0.00	\$0.00	\$0.00	\$0.00	\$0.00	0.00	\$0.00	0.00
Fitness Class (Location: 11)													
\$125.00	\$125.00	\$125.00	\$0.00	\$0.00	\$0.00	\$0.00	\$0.00	\$0.00	\$0.00	\$0.00	0.00	\$0.00	0.00
General Donation (Location: 11)													
\$17.00	\$17.00	\$17.00	\$0.00	\$0.00	\$0.00	\$0.00	\$0.00	\$0.00	\$0.00	\$0.00	0.00	\$0.00	0.00
Personal Training Session - Member (Location: 11)													
\$500.00	\$500.00	\$0.00	\$0.00	\$500.00	\$500.00	\$0.00	\$0.00	\$0.00	\$0.00	\$0.00	0.00	\$0.00	0.00
Print/Fax Copies (Location: 11)													
\$2.00	\$2.00	\$2.00	\$0.00	\$0.00	\$0.00	\$0.00	\$0.00	\$0.00	\$0.00	\$0.00	0.00	\$0.00	0.00
PT 30 (Location: 11)													
\$40.00	\$40.00	\$0.00	\$0.00	\$40.00	\$40.00	\$0.00	\$0.00	\$0.00	\$0.00	\$0.00	0.00	\$0.00	0.00
Trail Map (Location: 11)													
\$31.00	\$31.00	\$31.00	\$0.00	\$0.00	\$0.00	\$0.00	\$0.00	\$0.00	\$0.00	\$0.00	0.00	\$0.00	0.00

Revenue By Period - Detail

Start Date: 8/1/2018 12:00 AM

End Date: 8/31/2018 11:59 PM

Payment Methods: CA, CK, CC, IC, EC, CR

Other Payments

		DEBITS										CREDITS	
<u>Gross</u>	<u>Net</u>	<u>Cash</u>	<u>Check</u>	<u>CC (Gross)</u>	<u>CC (Net)</u>	<u>ACH (Gross)</u>	<u>ACH (Net)</u>	<u>Internal CC</u>	<u>Acct Credit</u>	<u>Other</u>	<u>Refunds</u>	<u>Other</u>	

Household Credit Accounts

		DEBITS										CREDITS	
<u>Gross</u>	<u>Net</u>	<u>Cash</u>	<u>Check</u>	<u>CC (Gross)</u>	<u>CC (Net)</u>	<u>ACH (Gross)</u>	<u>ACH (Net)</u>	<u>Internal CC</u>	<u>Acct Credit</u>	<u>Other</u>	<u>Refunds</u>	<u>Other</u>	