



## STANDARD FORM OF INFORMAL CONTRACT AND GENERAL CONDITIONS

*FOR  
Town of Beech Mountain  
Lower Pond Creek Boardwalk/Bridge  
Falls Trail stair renovation*

### **NOTICE TO BIDDERS**

Sealed bid for this work will be received by:

Sean Royall  
Beech Mountain  
1330 Pine Ridge Rd  
Beech Mountain, NC 28604

The Town of Beech Mountain will receive informal bids for the Lower Pond Creek Trail boardwalk and Falls Trail stair renovation project until 1:00 p.m., August 27, 2019 local prevailing time. Bids Opening will be at the Town of Beech Mountain Town Hall Council Room 403 Beech Mountain Parkway Beech Mountain NC. Time of opening will be 1:30 pm. on August 27<sup>th</sup>, 2019.

Bids must be mailed, or hand delivered to Town of Beech Mountain; Parks and Recreation Department, c/o Sean Royall, 1330 Pine Ridge Rd. Beech Mountain, NC 28604.

Contractors are hereby notified that they must have proper license under the State laws governing their respective trades. General Contractors must have general license in the state of North Carolina.

The Town reserves the right to reject any or all bids and waive informalities.

### **I. INVITATION**

The Town of Beech Mountain's Parks & Recreation Department is dedicated to providing quality recreational activities and programs year-round in a safe environment and meeting the recreational needs of residents and visitors of all ages, while enhancing the quality of life for all.

Qualified contractors are invited to submit proposals to provide construction services to the Town of Beech Mountain for construction on our public trails.

### **II. SCOPE OF WORK**

Construction of a boardwalk/bridge based off the engineering specifications drawn by IONCON Engineering and repair steps on the Falls Trail building a "block" style stair using 6x6 posts and gravel. The contractor will follow Beech Mountain Parks and Recreations trail plan, as much as possible, and work with the department on any special considerations.

A site visit will be required for bidding and a minimum of three references to be provided.

### **III. QUALIFICATIONS**

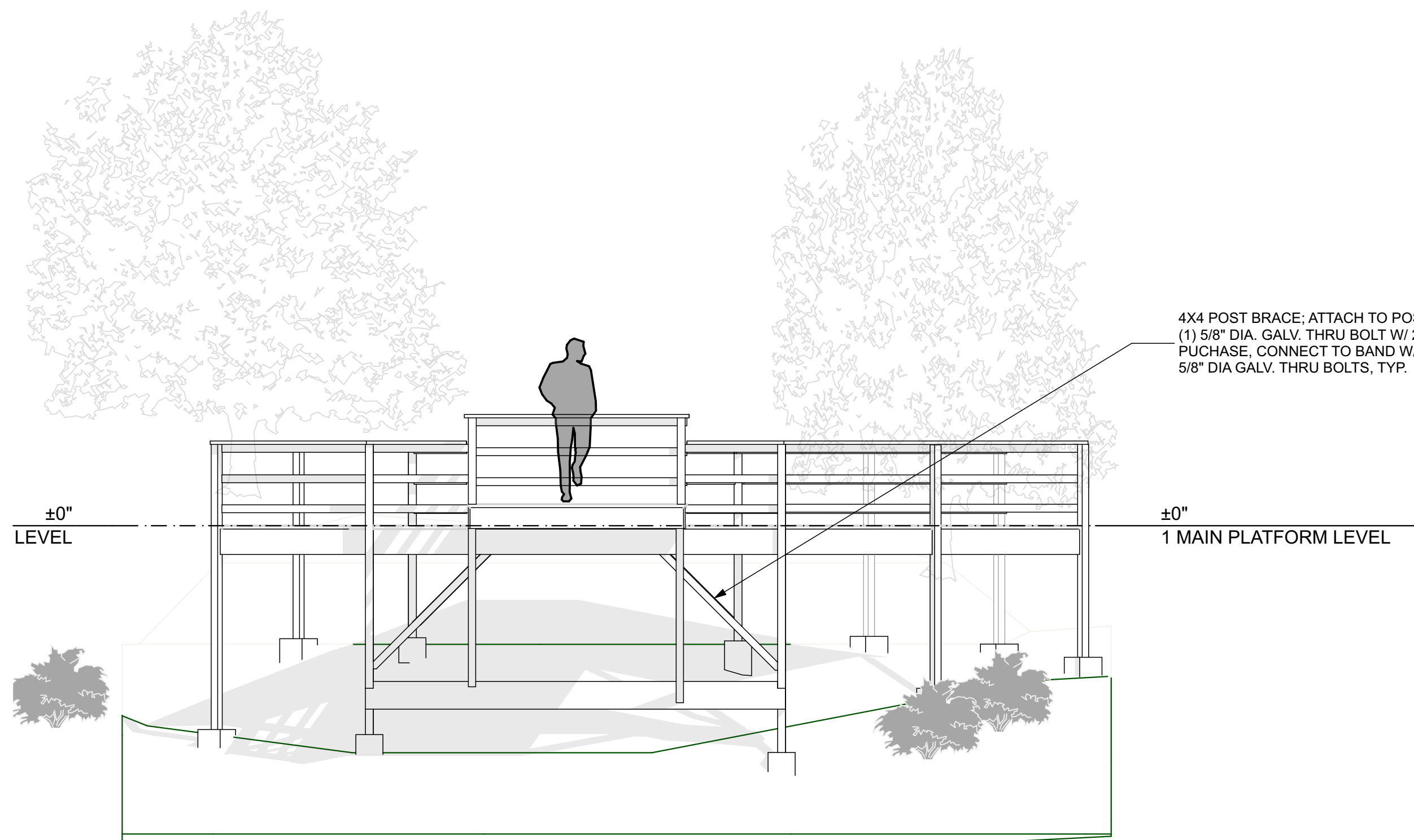
All interested parties shall be qualified to do business and licensed in accordance with all applicable laws of the state and local governments where the project is located. All bidders should be general contractors licensed in the state of North Carolina. In addition, all bidder shall have comparable and demonstrated experience.

#### **IV. SUBMISSION OF PROPOSALS**

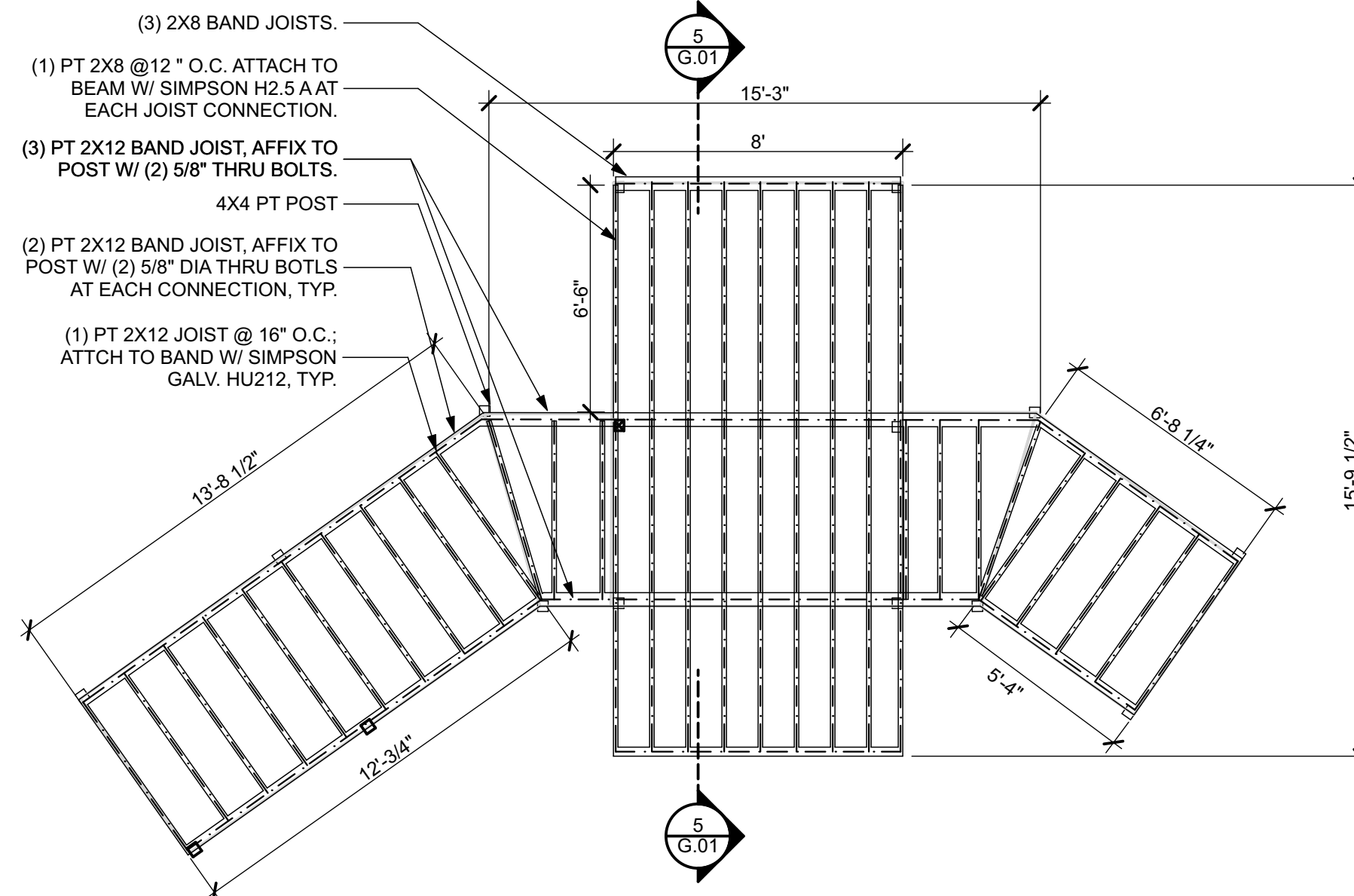
Proposals should include:

- Sealed envelope with project name and “Bid” listed on outside
- Name of company and key personnel with qualifications
- General contractor’s license number
- Include examples of experience similar to this project
- Provide a projected timetable according to Scope of Work

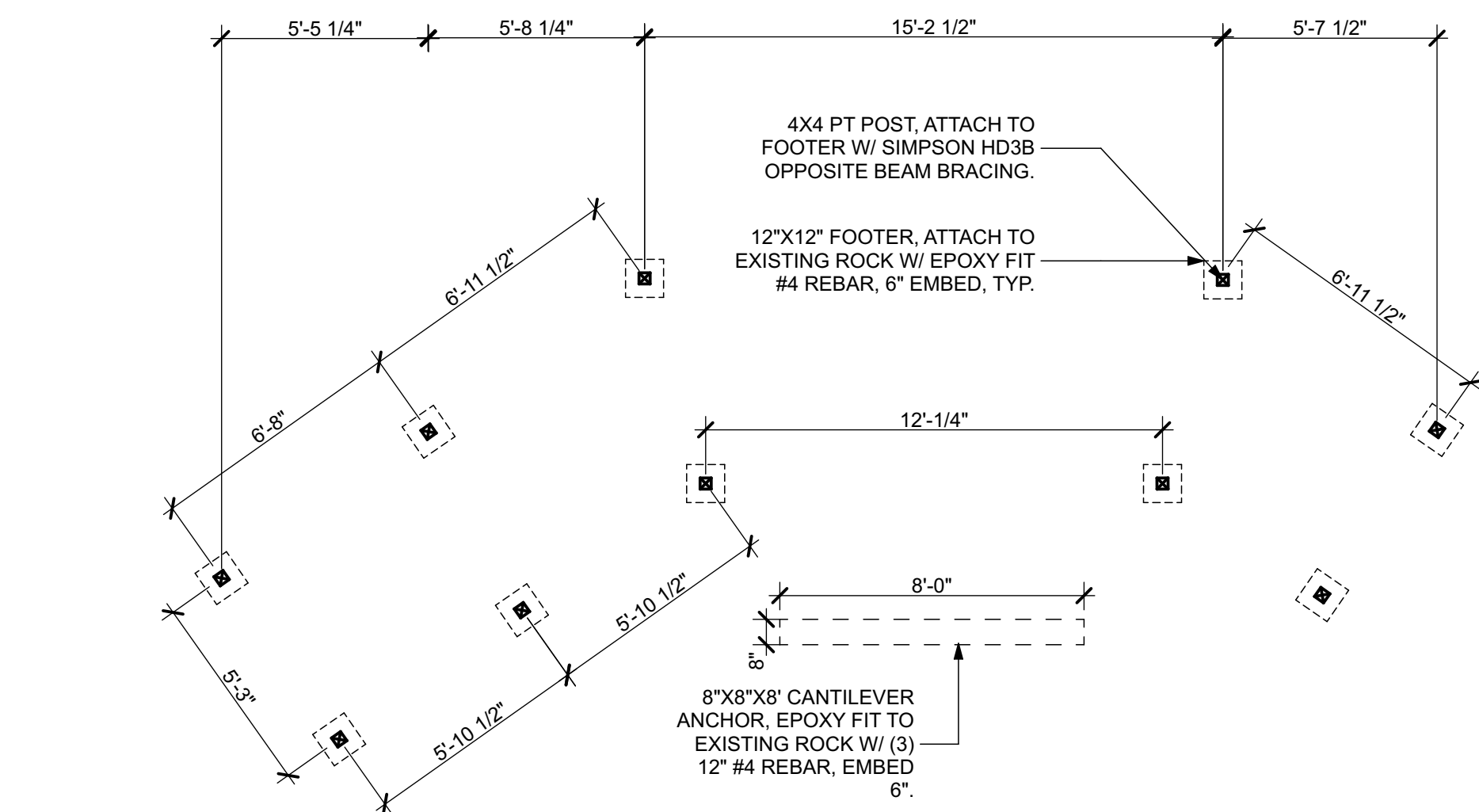
The contractor selected will need to demonstrate proof of general liability insurance of \$1 million per occurrence and list Town of Beech Mountain as additional insured for the duration of the work. In addition, the contractor must have a business license and be a licensed contract in the State of North Carolina.



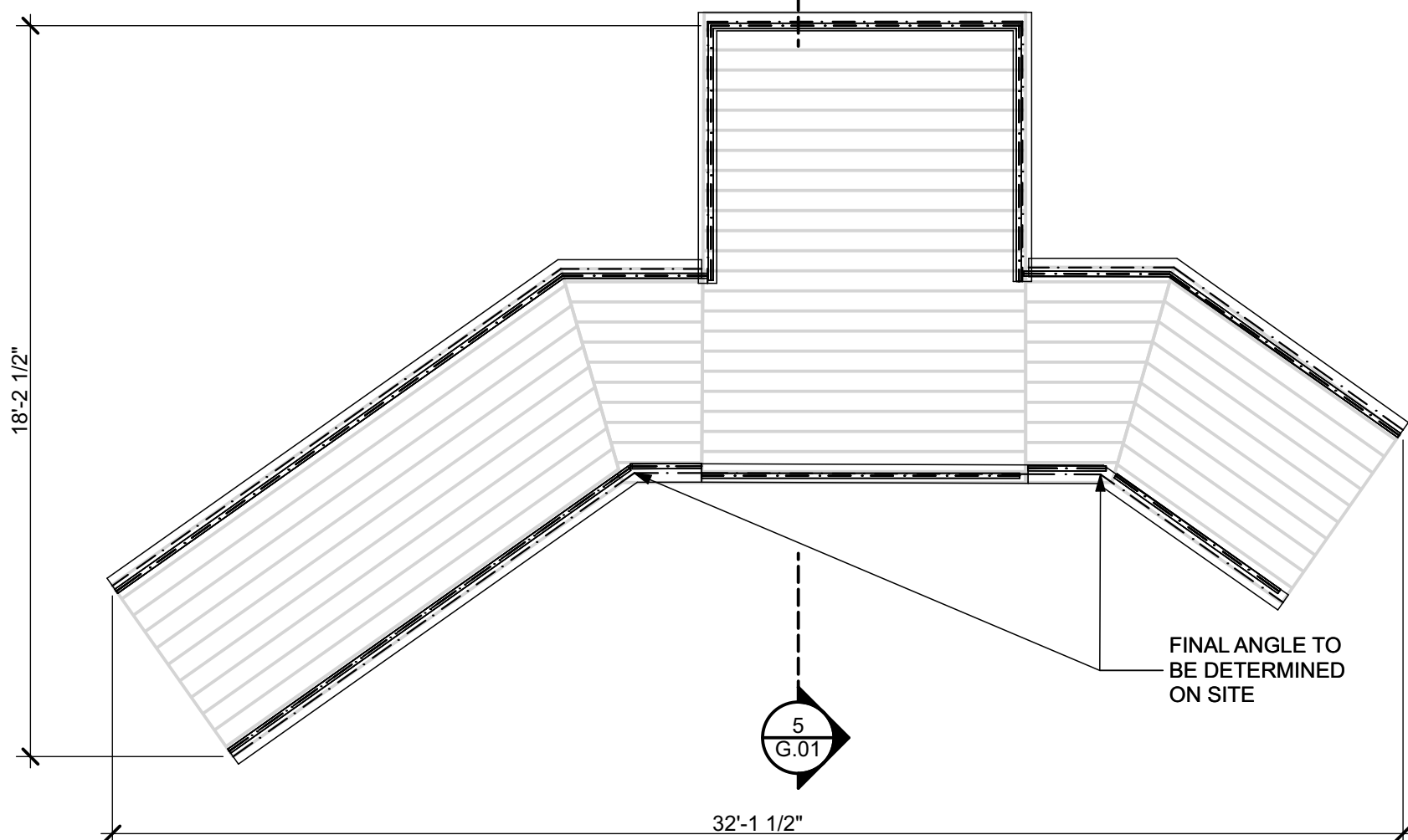
**1 CREEKSIDE ELEVATION**  
SCALE: 1/4" = 1'-0"



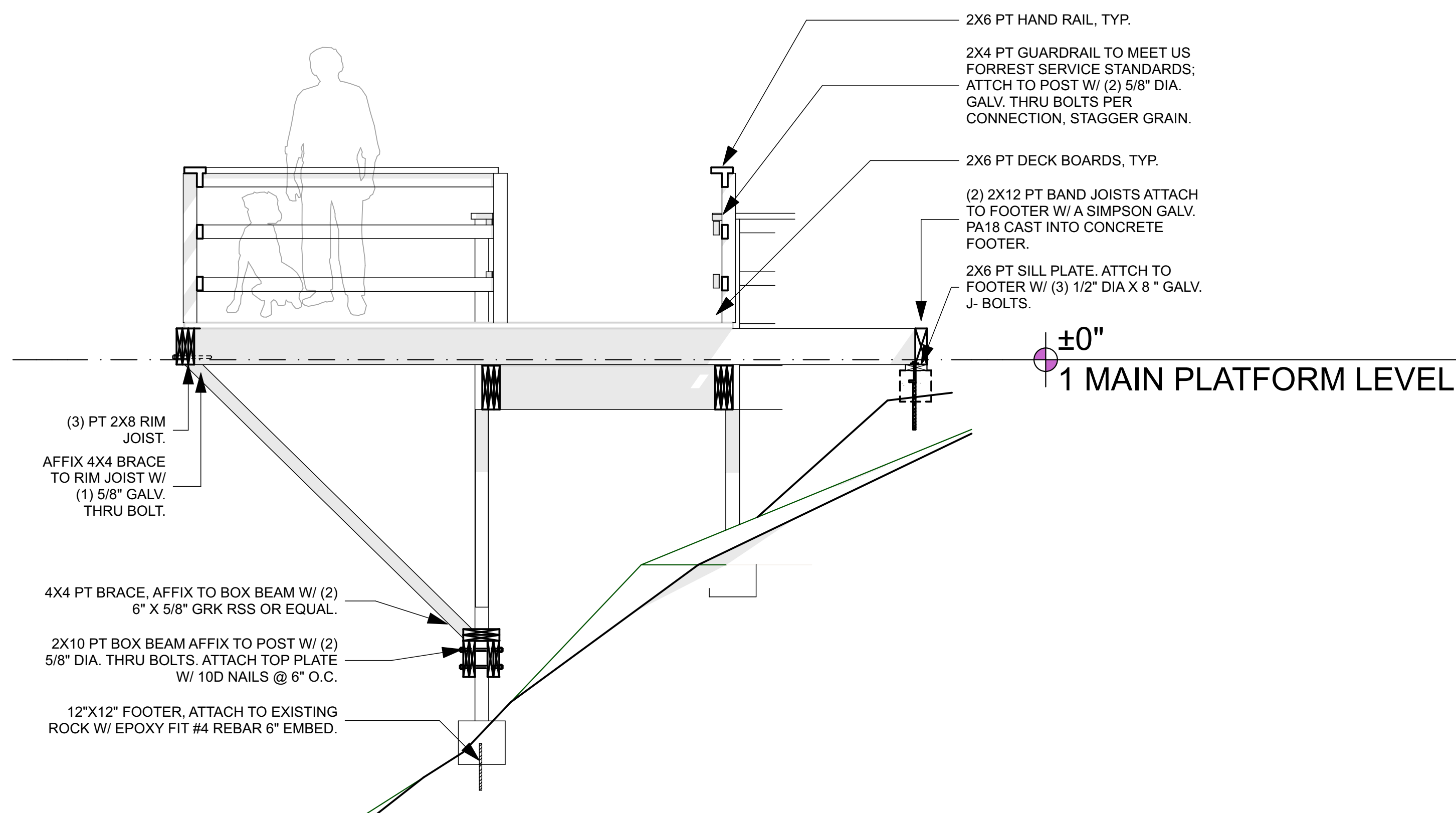
**4 PEDESTRIAN BRIDGE FRM'G. PLAN**  
SCALE: 1/4" = 1'-0"



**2 PIER PLAN**  
SCALE: 1/4" = 1'-0"



**3 BRIDGE FLOOR PLAN**  
SCALE: 1/4" = 1'-0"



**5 SECTION**  
SCALE: 1:24.65

**SCHEDULE OF VALUES**

A.P.N.: BEECH MOUNTAIN

- ELEVATION AMSL: 3535
- WIND ZONE: 120 MPH
- SNOW LOAD: 35
- LIVE LOAD: 60
- DEAD LOAD: 10
- DESIGN FROST DEPTH: 2FT

**MATERIALS**  
CONVENTIONAL LUMBER: SPF OR SYP, #2 OR BETTER  
ENGINEERED LUMBER: LVL: Fb=3100PSI, E=2000KSI, OR BETTER  
BOLTS: ASTM A307 OR BETTER  
CONCRETE: 3000 PSI AT 28 DAYS  
REINFORCEMENT REBAR: 60KSI  
EPOXY: SIMPSON SET EPOXY OR EQUAL  
WELD ROD: E70XX  
PLATE STEEL: ASTM A36  
HARDWARE: SIMPSON STRONG-TIE OR EQUAL  
DRAINAGE PIPE: MEET ASTM F405  
DRAINAGE STONE: #57 TYPICAL  
MASONRY: 12x8x16 CMU BLOCK.

**NOTES**

- ALL CONSTRUCTION TO MEET 2012 NORTH CAROLINA STATE BUILDING CODE: RESIDENTIAL CODE.
- ALL HARDWARE AND FASTENERS CONTACTING PRESSURE TREATED MATERIAL SHOULD BE APPROVED FOR USE WITH CORRESPONDING WOOD TREATMENT.
- ALL LUMBER CONTACTING CONCRETE TO BE PT.
- ALL WOOD CONNECTORS SHALL BE INSTALLED PER MANUFACTURER'S SPECIFICATIONS UNLESS OTHERWISE NOTED.
- CONTRACTOR TO FIELD VERIFY ALL DIMENSIONS, DRAWINGS REPRESENT TYPICAL CONDITIONS. AS-BUILT CONDITIONS MAY EXIST. ENGINEER NOT RESPONSIBLE FOR UN-COMPACTED FILL.
- FLASHING, COUNTER-FLASHING AND WATERPROOFING BY OTHERS.
- IONCON ENGINEERING IS ONLY RESPONSIBLE FOR THE STRUCTURAL ASPECTS AS REFERENCED HEREIN.

**UNITED STATES FOREST SERVICE RAIL SYSTEM STANDARDS FOR REMOTE AND LOW-RISK AREAS :** (OSHA-BASED) - REMOTE LOCATIONS ARE TYPICALLY LOW-RISK AREAS AND MAY NOT HAVE TO MEET THESE STANDARDS. THE OCCUPATIONAL SAFETY AND HEALTH ADMINISTRATION (OSHA, CFR 29, PART 1910, SUBPART D) REFERS TO A RAIL SYSTEM AS A STANDARD RAILING. WHILE OSHA REQUIREMENTS APPLY ONLY TO THE WORKPLACE, ITS STANDARD RAILING IS A GOOD CHOICE FOR PUBLIC TRAIL BRIDGES IN LOW-RISK AREAS. OSHA 1910.23 REQUIRES EVERY OPEN-SIDED FLOOR OR PLATFORM 4 FEET OR MORE ABOVE THE ADJACENT FLOOR OR GROUND LEVEL TO BE GUARDED BY A STANDARD RAILING ON ALL OPEN SIDES EXCEPT WHERE THERE IS AN ENTRANCE TO A RAMP, STAIRWAY, OR FIXED LADDER. A STANDARD RAILING SHALL CONSIST OF A TOP RAIL, INTERMEDIATE RAIL, AND POSTS. THE RAILING SHALL HAVE A VERTICAL HEIGHT OF 42 INCHES NOMINAL FROM THE UPPER SURFACE OF THE TOP RAIL TO THE FLOOR, PLATFORM, RUNWAY, OR RAMP. THE INTERMEDIATE RAIL SHALL BE ABOUT HALFWAY BETWEEN THE TOP RAIL AND THE FLOOR, PLATFORM, RUNWAY, OR RAMP. A BOTTOM RAIL (CALLED A TOEBOARD BY OSHA) IS RECOMMENDED. FOR PEDESTRIAN TRAIL BRIDGES, THE VERTICAL DISTANCE BETWEEN STEEL RAILS MUST NOT EXCEED 19 INCHES AND THE VERTICAL DISTANCE BETWEEN WOOD RAILS MUST NOT EXCEED 15 INCHES. THE COMPLETED RAIL SYSTEM SHALL BE CAPABLE OF WITHSTANDING A LOAD OF AT LEAST 200 POUNDS APPLIED IN ANY DIRECTION AT ANY POINT ON THE TOP RAIL.



PATRICK A. BEVILLE, PE  
LEED AP  
IONCON, PLLC P-0820  
726 STATE FARM RD UNIT B  
BOONE, NORTH CAROLINA  
28607  
PHONE: 828-264-8500



LOWER CREEK POND BRIDGE  
TOWN OF BEECH MTN  
1330 PINE RIDGE RD  
BEECH MOUNTAIN, NC  
28604  
828-387-3003

IF THE ABOVE DIMENSION DOES NOT MEASURE ONE INCH (1") EXACTLY, THIS DRAWING WILL HAVE BEEN ENLARGED OR REDUCED, AFFECTING ALL LABELED SCALES.

BY	REVISIONS	DATE

Date: 7/10/18  
Scale: AS NOTED  
Drawn: APW  
Job: 185010

**G.01**

Plotted On: 7/10/18